

## Product datasheet for **TA341984**

### Calcyon (CALY) Rabbit Polyclonal Antibody

#### Product data:

Product Type:	Primary Antibodies
Applications:	WB
Recommended Dilution:	WB
Reactivity:	Rat
Host:	Rabbit
Isotype:	IgG
Clonality:	Polyclonal
Immunogen:	The immunogen for anti-Caly antibody: synthetic peptide corresponding to a region of Rat. Synthetic peptide located within the following region: RHRSLAAIGAYPLSRKHGTEMPAIWGNYSYRAGKEEHKGTTPAAMTVSTA
Formulation:	Liquid. Purified antibody supplied in 1x PBS buffer with 0.09% (w/v) sodium azide and 2% sucrose.
Concentration:	lot specific
Conjugation:	Unconjugated
Storage:	Store at -20°C as received.
Stability:	Stable for 12 months from date of receipt.
Predicted Protein Size:	25 kDa
Gene Name:	calcyon neuron specific vesicular protein
Database Link:	<a href="#">NP_056537</a> <a href="#">Entrez Gene 50632 Human</a> <a href="#">Q9NYX4</a>
Background:	dopamine receptor 1 (D1R) of D1-like receptors interacting protein [RGD, Feb 2006]. Transcript Variant:This variant (1) representsThe longer variant. Both variants 1 and 2 encodeThe same protein. ##Evidence-Data-START## Transcript exon combination :: AF303658.1 [ECO:0000332] RNAseq introns :: mixed/partial sample support ERS160522, ERS160537 [ECO:0000350] ##Evidence-Data-END##
Synonyms:	DRD1IP; NSG3

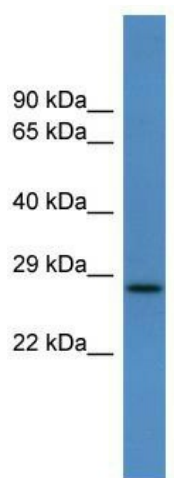


[View online »](#)

**Note:** Immunogen Sequence Homology: Dog: 100%; Pig: 100%; Rat: 100%; Human: 100%; Mouse: 100%; Rabbit: 100%; Guinea pig: 100%; Bovine: 86%

**Protein Families:** Druggable Genome, Transmembrane

**Product images:**



WB Suggested Anti-Caly Antibody Titration: 0.2-1 ug/ml; ELISA Titer: 1: 312500; Positive Control: Rat Lung