

## Product datasheet for **TA341982**

### COQ2 Rabbit Polyclonal Antibody

#### Product data:

Product Type:	Primary Antibodies
Applications:	WB
Recommended Dilution:	WB
Reactivity:	Human
Host:	Rabbit
Isotype:	IgG
Clonality:	Polyclonal
Immunogen:	The immunogen for anti-COQ2 antibody: synthetic peptide directed towards the middle region of human COQ2. Synthetic peptide located within the following region: FSGVMWTLIYDTIYAHQDKRDDVLIGLKSTALRFGENTKPWLSGFSVAML
Formulation:	Liquid. Purified antibody supplied in 1x PBS buffer with 0.09% (w/v) sodium azide and 2% sucrose. <i>Note that this product is shipped as lyophilized powder to China customers.</i>
Concentration:	lot specific
Conjugation:	Unconjugated
Storage:	Store at -20°C as received.
Stability:	Stable for 12 months from date of receipt.
Predicted Protein Size:	42 kDa
Gene Name:	coenzyme Q2, polyprenyltransferase
Database Link:	<a href="#">NP_056512</a> <a href="#">Entrez Gene 27235 Human</a>
Background:	This gene encodes an enzyme that functions inThe final steps inThe biosynthesis of CoQ (ubiquinone), a redox carrier inThe mitochondrial respiratory chain and a lipid-soluble antioxidant.This enzyme, which is part ofThe coenzyme Q10 pathway, catalyzesThe prenylation of parahydroxybenzoate with an all-trans polyprenyl group. Mutations inThis gene cause coenzyme Q10 deficiency, a mitochondrial encephalomyopathy, and also COQ2 nephropathy, an inherited form of mitochondriopathy with primary renal involvement. [provided by RefSeq, Oct 2009]



[View online »](#)

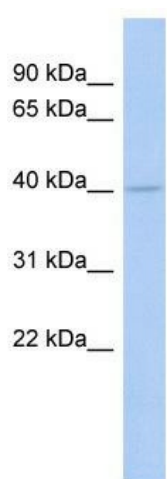
**Synonyms:** CL640; COQ10D1; MSA1

**Note:** Immunogen Sequence Homology: Human: 100%; Dog: 93%; Rabbit: 93%; Yeast: 91%; Pig: 86%; Rat: 86%; Mouse: 86%; Zebrafish: 86%; Goat: 79%; Horse: 79%

**Protein Families:** Transmembrane

**Protein Pathways:** Ubiquinone and other terpenoid-quinone biosynthesis

**Product images:**



WB Suggested Anti-COQ2 Antibody Titration: 0.2-1 ug/ml; ELISA Titer: 1: 12500; Positive Control: DU145 cell lysate COQ2 is supported by BioGPS gene expression data to be expressed in DU145