

## Product datasheet for **TA341981**

### **DHRS7B Rabbit Polyclonal Antibody**

#### **Product data:**

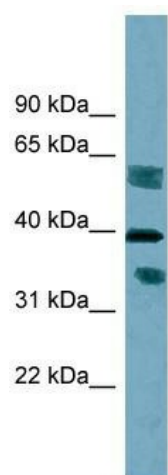
<b>Product Type:</b>	Primary Antibodies
<b>Applications:</b>	WB
<b>Recommended Dilution:</b>	WB
<b>Reactivity:</b>	Human
<b>Host:</b>	Rabbit
<b>Isotype:</b>	IgG
<b>Clonality:</b>	Polyclonal
<b>Immunogen:</b>	The immunogen for anti-DHRS7B antibody: synthetic peptide directed towards the middle region of human DHRS7B. Synthetic peptide located within the following region: QAFFDCLRAEMEQYEIEVTVISPGYIHTNLSVNAITADGSRYGVMDDTTA
<b>Formulation:</b>	Liquid. Purified antibody supplied in 1x PBS buffer with 0.09% (w/v) sodium azide and 2% sucrose. <i>Note that this product is shipped as lyophilized powder to China customers.</i>
<b>Concentration:</b>	lot specific
<b>Conjugation:</b>	Unconjugated
<b>Storage:</b>	Store at -20°C as received.
<b>Stability:</b>	Stable for 12 months from date of receipt.
<b>Predicted Protein Size:</b>	35 kDa
<b>Gene Name:</b>	dehydrogenase/reductase 7B
<b>Database Link:</b>	<a href="#">NP_056325</a> <a href="#">Entrez Gene 25979 Human</a> <a href="#">Q6IAN0</a>
<b>Background:</b>	This gene is located within The Smith-Magenis syndrome region on chromosome 17. It encodes a protein of unknown function. [provided by RefSeq, Jul 2008]
<b>Synonyms:</b>	CGI-93; SDR32C1
<b>Note:</b>	Immunogen Sequence Homology: Human: 100%; Pig: 93%; Rat: 93%; Mouse: 93%; Rabbit: 93%; Guinea pig: 93%; Dog: 86%; Bovine: 86%



[View online »](#)

Protein Families: Druggable Genome, Transmembrane

### Product images:



WB Suggested Anti-DHRS7B Antibody Titration:  
0.2-1 ug/ml; ELISA Titer: 1: 12500; Positive  
Control: HT1080 cell lysate