

## Product datasheet for **TA341980**

### ATL3 Rabbit Polyclonal Antibody

#### Product data:

Product Type:	Primary Antibodies
Applications:	WB
Recommended Dilution:	WB
Reactivity:	Human
Host:	Rabbit
Isotype:	IgG
Clonality:	Polyclonal
Immunogen:	The immunogen for anti-DKFZP564J0863 antibody: synthetic peptide directed towards the middle region of human DKFZP564J0863. Synthetic peptide located within the following region: IYYNNMEEVCGGKPYLSPDILEEKHCFKQLALDHFKTKKMGKDFSF
Formulation:	Liquid. Purified antibody supplied in 1x PBS buffer with 0.09% (w/v) sodium azide and 2% sucrose. <i>Note that this product is shipped as lyophilized powder to China customers.</i>
Concentration:	lot specific
Conjugation:	Unconjugated
Storage:	Store at -20°C as received.
Stability:	Stable for 12 months from date of receipt.
Predicted Protein Size:	60 kDa
Gene Name:	atlastin GTPase 3
Database Link:	<a href="#">NP_056274</a> <a href="#">Entrez Gene 25923 Human</a> <a href="#">Q6DD88</a>
Background:	This gene encodes a member of a family of dynamin-like, integral membrane GTPases. The encoded protein is required for the proper formation of the network of interconnected tubules of the endoplasmic reticulum. Mutations in this gene may be associated with hereditary sensory neuropathy type IF. Alternatively spliced transcript variants that encode distinct isoforms have been described. [provided by RefSeq, Feb 2014]
Synonyms:	HSN1F

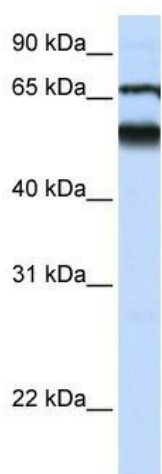


[View online »](#)

**Note:** Immunogen Sequence Homology: Dog: 100%; Pig: 100%; Rat: 100%; Human: 100%; Mouse: 100%; Rabbit: 100%; Guinea pig: 100%; Horse: 93%; Bovine: 93%

**Protein Families:** Transmembrane

**Product images:**



WB Suggested Anti-DKFZP564J0863 Antibody  
Titration: 0.2-1 ug/ml; ELISA Titer: 1: 312500;  
Positive Control: Human Lung