

## Product datasheet for **TA341978**

### CYP2A7 Rabbit Polyclonal Antibody

#### Product data:

Product Type:	Primary Antibodies
Applications:	WB
Recommended Dilution:	WB
Reactivity:	Human
Host:	Rabbit
Isotype:	IgG
Clonality:	Polyclonal
Immunogen:	The immunogen for anti-TMEM158 antibody: synthetic peptide directed towards the middle region of human TMEM158. Synthetic peptide located within the following region: AHGRAFFAAAFHRVGPPLLIEHLGLAAGGAQQDLRLCVGCGWVRGRRTGR
Formulation:	Liquid. Purified antibody supplied in 1x PBS buffer with 0.09% (w/v) sodium azide and 2% sucrose. <i>Note that this product is shipped as lyophilized powder to China customers.</i>
Concentration:	lot specific
Conjugation:	Unconjugated
Storage:	Store at -20°C as received.
Stability:	Stable for 12 months from date of receipt.
Predicted Protein Size:	30 kDa
Gene Name:	cytochrome P450 family 2 subfamily A member 7
Database Link:	<a href="#">NP_000755</a> <a href="#">Entrez Gene 1549 Human P20853</a>
Background:	Constitutive activation ofThe Ras pathway triggers an irreversible proliferation arrest reminiscent of replicative senescence. Transcription ofThis gene is upregulated in response to activation ofThe Ras pathway, but not under other conditions that induce senescence.The encoded protein is similar to a rat cell surface receptor proposed to function in a neuronal survival pathway. [provided by RefSeq, Jul 2008]
Synonyms:	CPA7; CPAD; CYP2A; CYP11A7; P450-IIA4



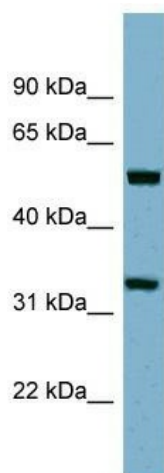
[View online »](#)

**Note:** Immunogen Sequence Homology: Pig: 100%; Rat: 100%; Human: 100%; Mouse: 100%; Bovine: 100%

**Protein Families:** Druggable Genome, P450, Transmembrane

**Protein Pathways:** Caffeine metabolism, Drug metabolism - cytochrome P450, Drug metabolism - other enzymes, Metabolic pathways, Retinol metabolism

### Product images:



WB Suggested Anti-TMEM158 Antibody Titration:  
0.2-1 ug/ml; ELISA Titer: 1: 12500; Positive  
Control: ACHN cell lysate