

## Product datasheet for **TA341971**

### **LRRC8B Rabbit Polyclonal Antibody**

#### **Product data:**

<b>Product Type:</b>	Primary Antibodies
<b>Applications:</b>	WB
<b>Recommended Dilution:</b>	WB
<b>Reactivity:</b>	Human
<b>Host:</b>	Rabbit
<b>Isotype:</b>	IgG
<b>Clonality:</b>	Polyclonal
<b>Immunogen:</b>	The immunogen for anti-LRRC8B antibody: synthetic peptide directed towards the N terminal of human LRRC8B. Synthetic peptide located within the following region: PSTSSRLEHFVAILHKCFDSPWTTTRALSETVAEQSVRPLKLSKSKILLSS
<b>Formulation:</b>	Liquid. Purified antibody supplied in 1x PBS buffer with 0.09% (w/v) sodium azide and 2% sucrose. <i>Note that this product is shipped as lyophilized powder to China customers.</i>
<b>Concentration:</b>	lot specific
<b>Conjugation:</b>	Unconjugated
<b>Storage:</b>	Store at -20°C as received.
<b>Stability:</b>	Stable for 12 months from date of receipt.
<b>Predicted Protein Size:</b>	92 kDa
<b>Gene Name:</b>	leucine-rich repeat containing 8 family member B
<b>Database Link:</b>	<a href="#">NP_056165</a> <a href="#">Entrez Gene 23507 Human</a> <a href="#">Q6P9F7</a>
<b>Background:</b>	Component ofThe volume-regulated anion channel (VRAC, also named VSOAC channel), an anion channel required to maintain a constant cell volume in response to extracellular or intracellular osmotic changes.The VRAC channel conducts iodide better than chloride and may also conduct organic osmolytes like taurine. It is unclear whether LRRC8B constitutes a pore-forming subunit or whether it is closely associated withThe pore.
<b>Synonyms:</b>	TA-LRRP; TALRRP

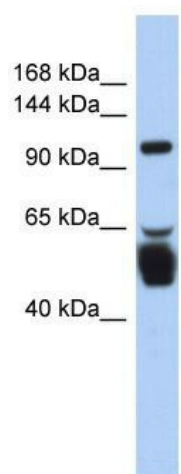


[View online »](#)

**Note:** Immunogen Sequence Homology: Rat: 100%; Human: 100%; Mouse: 100%; Pig: 93%; Horse: 93%; Bovine: 93%; Rabbit: 93%; Guinea pig: 93%; Dog: 86%

**Protein Families:** Transmembrane

**Product images:**



WB Suggested Anti-LRRC8B Antibody Titration:  
0.2-1 ug/ml; ELISA Titer: 1: 62500; Positive  
Control: Human Stomach