

Product datasheet for **TA341970**

LRRC8B Rabbit Polyclonal Antibody

Product data:

Product Type:	Primary Antibodies
Applications:	WB
Recommended Dilution:	WB, IHC
Reactivity:	Human
Host:	Rabbit
Isotype:	IgG
Clonality:	Polyclonal
Immunogen:	The immunogen for anti-LRRC8B antibody: synthetic peptide directed towards the middle region of human LRRC8B. Synthetic peptide located within the following region: TLYLKSSLSRIPQVVTDLLPSLQKLSLDNEGSKLVVLNNLKKMVNLKSLE
Formulation:	Liquid. Purified antibody supplied in 1x PBS buffer with 0.09% (w/v) sodium azide and 2% sucrose. <i>Note that this product is shipped as lyophilized powder to China customers.</i>
Concentration:	lot specific
Conjugation:	Unconjugated
Storage:	Store at -20°C as received.
Stability:	Stable for 12 months from date of receipt.
Predicted Protein Size:	92 kDa
Gene Name:	leucine-rich repeat containing 8 family member B
Database Link:	NP_056165 Entrez Gene 23507 Human Q6P9F7
Background:	Component ofThe volume-regulated anion channel (VRAC, also named VSOAC channel), an anion channel required to maintain a constant cell volume in response to extracellular or intracellular osmotic changes.The VRAC channel conducts iodide better than chloride and may also conduct organic osmolytes like taurine. It is unclear whether LRRC8B constitutes a pore-forming subunit or whether it is closely associated withThe pore.
Synonyms:	TA-LRRP; TALRRP

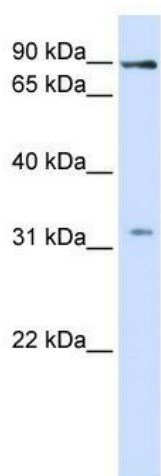


[View online »](#)

Note: Immunogen Sequence Homology: Pig: 100%; Rat: 100%; Horse: 100%; Human: 100%; Mouse: 100%; Bovine: 100%; Guinea pig: 100%; Dog: 93%; Rabbit: 93%

Protein Families: Transmembrane

Product images:



WB Suggested Anti-LRRC8B Antibody Titration: 1 ug/ml; Positive Control: Fetal liver cell lysate