

Product datasheet for **TA341969**

DULLARD (CTDNEP1) Rabbit Polyclonal Antibody

Product data:

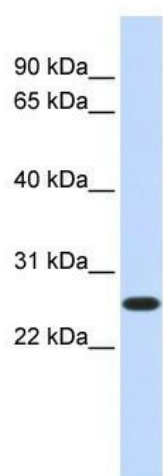
| | |
|-------------------------|--|
| Product Type: | Primary Antibodies |
| Applications: | WB |
| Recommended Dilution: | WB |
| Reactivity: | Human |
| Host: | Rabbit |
| Isotype: | IgG |
| Clonality: | Polyclonal |
| Immunogen: | The immunogen for anti-DULLARD antibody: synthetic peptide directed towards the middle region of human DULLARD. Synthetic peptide located within the following region: HPDNAIPIKSWFSDPSDTALLNLLPMLDALRFTADVRSVLSRNLHQHRLW |
| Formulation: | Liquid. Purified antibody supplied in 1x PBS buffer with 0.09% (w/v) sodium azide and 2% sucrose. <i>Note that this product is shipped as lyophilized powder to China customers.</i> |
| Concentration: | lot specific |
| Conjugation: | Unconjugated |
| Storage: | Store at -20°C as received. |
| Stability: | Stable for 12 months from date of receipt. |
| Predicted Protein Size: | 28 kDa |
| Gene Name: | CTD nuclear envelope phosphatase 1 |
| Database Link: | NP_056158 Entrez Gene 23399 Human O95476 |
| Background: | DULLARD is a serine/threonine phosphatase which may be required for proper nuclear membrane morphology. DULLARD was involved in LPIN1 dephosphorylation. It may antagonize BMP signaling. |
| Synonyms: | DULLARD; HSA011916; NET56 |
| Note: | Immunogen Sequence Homology: Dog: 100%; Pig: 100%; Rat: 100%; Horse: 100%; Human: 100%; Mouse: 100%; Bovine: 100%; Rabbit: 100%; Zebrafish: 100%; Guinea pig: 100% |



[View online >](#)

Protein Families: Transmembrane

Product images:



WB Suggested Anti-DULLARD Antibody Titration:
0.2-1 ug/ml; ELISA Titer: 1: 2500; Positive Control:
Human Lung