

Product datasheet for **TA341967**

ZDHHC17 Rabbit Polyclonal Antibody

Product data:

| | |
|-------------------------|---|
| Product Type: | Primary Antibodies |
| Applications: | IHC, WB |
| Recommended Dilution: | WB, IHC |
| Reactivity: | Human |
| Host: | Rabbit |
| Isotype: | IgG |
| Clonality: | Polyclonal |
| Immunogen: | The immunogen for anti-ZDHHC17 antibody: synthetic peptide directed towards the middle region of human ZDHHC17. Synthetic peptide located within the following region: LFYNFGKSWKSDPGIIKATEEQKKKTIVELAETGSLDLSIFCSTCLIRKP |
| Formulation: | Liquid. Purified antibody supplied in 1x PBS buffer with 0.09% (w/v) sodium azide and 2% sucrose. <i>Note that this product is shipped as lyophilized powder to China customers.</i> |
| Concentration: | lot specific |
| Conjugation: | Unconjugated |
| Storage: | Store at -20°C as received. |
| Stability: | Stable for 12 months from date of receipt. |
| Predicted Protein Size: | 73 kDa |
| Gene Name: | zinc finger DHHC-type containing 17 |
| Database Link: | NP_056151 Entrez Gene 23390 Human Q8IUH5 |
| Background: | ZDHHC17 is a palmitoyltransferase specific for a subset of neuronal proteins, including SNAP25, DLG4/PSD95, GAD2, SYT1 and HD. It may be involved inThe sorting or targeting of critical proteins involved inThe initiating events of endocytosis atThe plasma membrane. It may be involved inThe NF-kappa-B signaling pathway and has transforming activity. |
| Synonyms: | HIP3; HIP14; HSPC294; HYPH |



[View online »](#)

Note: Immunogen Sequence Homology: Dog: 100%; Pig: 100%; Rat: 100%; Horse: 100%; Human: 100%; Mouse: 100%; Bovine: 100%; Rabbit: 100%; Guinea pig: 100%; Zebrafish: 93%

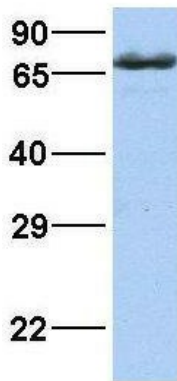
Protein Families: Druggable Genome, Transmembrane

Product images:



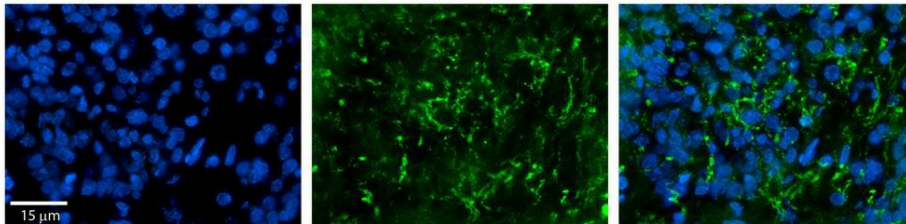
WB Suggested Anti-ZDHHC17 Antibody Titration: 0.2-1 ug/ml; Positive Control: HeLa cell lysate. ZDHHC17 is supported by BioGPS gene expression data to be expressed in HeLa

ZDHHC17



Rabbit Anti-ZDHHC17
Sample Type: Human HeLa
Antibody Concentration: 1ug/mL

Host: Rabbit; Target Name: ZDHHC17; Sample Tissue: HeLa; Antibody Dilution: 1.0 ug/ml. ZDHHC17 is supported by BioGPS gene expression data to be expressed in HeLa



Rabbit Anti-ZDHHC17 Antibody; Formalin Fixed Paraffin Embedded Tissue: Human Pineal Tissue; Observed Staining: Cytoplasmic in vesicles and processes of pinealocytes; Primary Antibody Concentration: 1: 100; Secondary Antibody: Donkey anti-Rabbit-Cy3; Secon