

Product datasheet for **TA341966**

ADCY6 Rabbit Polyclonal Antibody

Product data:

Product Type:	Primary Antibodies
Applications:	WB
Recommended Dilution:	WB
Reactivity:	Human
Host:	Rabbit
Isotype:	IgG
Clonality:	Polyclonal
Immunogen:	The immunogen for anti-ADCY6 antibody: synthetic peptide directed towards the C terminal of human ADCY6. Synthetic peptide located within the following region: LIYLVLLLGGPPATIFDNYDLLLGVHGLASSNETFDGLDCPAAGRVALKY
Formulation:	Liquid. Purified antibody supplied in 1x PBS buffer with 0.09% (w/v) sodium azide and 2% sucrose. <i>Note that this product is shipped as lyophilized powder to China customers.</i>
Concentration:	lot specific
Conjugation:	Unconjugated
Storage:	Store at -20°C as received.
Stability:	Stable for 12 months from date of receipt.
Predicted Protein Size:	125 kDa
Gene Name:	adenylate cyclase 6
Database Link:	NP_066193 Entrez Gene 112 Human O43306
Background:	This gene encodes adenylate cyclase 6, which is a membrane-associated enzyme and catalyzes the formation of the secondary messenger cyclic adenosine monophosphate (cAMP). The expression of this gene is found in normal thyroid and brain tissues, as well as some tumors; and its expression is significantly higher in one hyperfunctioning thyroid tumor than in normal thyroid tissue. Alternative splicing generates 2 transcript variants. [provided by RefSeq, Jul 2008]



[View online »](#)

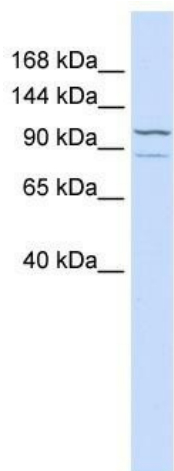
Synonyms: AC6

Note: Immunogen Sequence Homology: Pig: 100%; Rat: 100%; Horse: 100%; Human: 100%; Mouse: 100%; Bovine: 100%; Dog: 93%; Rabbit: 93%

Protein Families: Druggable Genome, Transmembrane

Protein Pathways: Chemokine signaling pathway, Dilated cardiomyopathy, Gap junction, GnRH signaling pathway, Melanogenesis, Oocyte meiosis, Progesterone-mediated oocyte maturation, Purine metabolism, Taste transduction, Vascular smooth muscle contraction

Product images:



WB Suggested Anti-ADCY6 Antibody Titration: 0.2-1 ug/ml; ELISA Titer: 1: 312500; Positive Control: Hela cell lysate