

Product datasheet for **TA341965**

MINAR1 Rabbit Polyclonal Antibody

Product data:

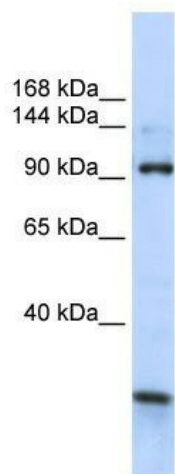
Product Type:	Primary Antibodies
Applications:	WB
Recommended Dilution:	WB
Reactivity:	Human
Host:	Rabbit
Isotype:	IgG
Clonality:	Polyclonal
Immunogen:	The immunogen for anti-KIAA1024 antibody: synthetic peptide directed towards the C terminal of human KIAA1024. Synthetic peptide located within the following region: DNKDWHRKSKEADRQYDIPPQHRLPKQPKDGLVEQVFSPHPYPASLKAH
Formulation:	Liquid. Purified antibody supplied in 1x PBS buffer with 0.09% (w/v) sodium azide and 2% sucrose. <i>Note that this product is shipped as lyophilized powder to China customers.</i>
Concentration:	lot specific
Conjugation:	Unconjugated
Storage:	Store at -20°C as received.
Stability:	Stable for 12 months from date of receipt.
Predicted Protein Size:	103 kDa
Gene Name:	KIAA1024
Database Link:	NP_056021 Entrez Gene 23251 Human Q9UPX6
Background:	KIAA1024 is a single-pass membrane proteinPotential. It belongs toThe UPF0258 family.The function ofThe KIAA1024 protein remains unknown.
Synonyms:	KIAA1024
Note:	Immunogen Sequence Homology: Dog: 100%; Rat: 100%; Human: 100%; Mouse: 100%; Bovine: 100%; Pig: 93%; Horse: 93%; Guinea pig: 93%; Rabbit: 79%



[View online »](#)

Protein Families: Transmembrane

Product images:



WB Suggested Anti-KIAA1024 Antibody Titration:
0.2-1 ug/ml; ELISA Titer: 1: 312500; Positive
Control: Human brain