

Product datasheet for **TA341964**

SV2A Rabbit Polyclonal Antibody

Product data:

Product Type:	Primary Antibodies
Applications:	WB
Recommended Dilution:	WB
Reactivity:	Human, Mouse
Host:	Rabbit
Isotype:	IgG
Clonality:	Polyclonal
Immunogen:	The immunogen for anti-SV2A antibody: synthetic peptide directed towards the middle region of human SV2A. Synthetic peptide located within the following region: LENQIHRGGQYFNDKFIGLRLKSVSFEDSLFEECYFEDVTSSNTFFRNCT
Formulation:	Liquid. Purified antibody supplied in 1x PBS buffer with 0.09% (w/v) sodium azide and 2% sucrose. <i>Note that this product is shipped as lyophilized powder to China customers.</i>
Concentration:	lot specific
Conjugation:	Unconjugated
Storage:	Store at -20°C as received.
Stability:	Stable for 12 months from date of receipt.
Predicted Protein Size:	83 kDa
Gene Name:	synaptic vesicle glycoprotein 2A
Database Link:	NP_055664 Entrez Gene 64051 Mouse Entrez Gene 9900 Human Q7L0J3
Background:	Plays a role inThe control of regulated secretion in neural and endocrine cells, enhancing selectively low-frequency neurotransmission. Positively regulates vesicle fusion by maintainingThe readily releasable pool of secretory vesicles.
Synonyms:	SV2
Note:	Immunogen Sequence Homology: Dog: 100%; Pig: 100%; Rat: 100%; Horse: 100%; Human: 100%; Mouse: 100%; Bovine: 100%; Rabbit: 100%; Guinea pig: 100%; Zebrafish: 79%

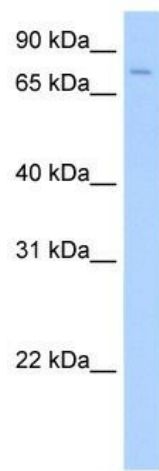


[View online »](#)

Protein Families: Secreted Protein, Transmembrane

Protein Pathways: ECM-receptor interaction

Product images:



WB Suggested Anti-SV2A Antibody Titration: 0.2-1 ug/ml; Positive Control: Human brain