

## Product datasheet for **TA341963**

### SV2B Rabbit Polyclonal Antibody

#### Product data:

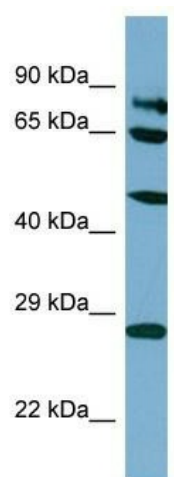
Product Type:	Primary Antibodies
Applications:	WB
Recommended Dilution:	WB
Reactivity:	Human
Host:	Rabbit
Isotype:	IgG
Clonality:	Polyclonal
Immunogen:	The immunogen for Anti-SV2B antibody is: synthetic peptide directed towards the C-terminal region of Human SV2B. Synthetic peptide located within the following region: TINFTMENQIHQHGKLVNDKFRMYFKHVLFFEDTFFDECYFEDVTSTDTY
Formulation:	Liquid. Purified antibody supplied in 1x PBS buffer with 0.09% (w/v) sodium azide and 2% sucrose.
Concentration:	lot specific
Purification:	Affinity Purified
Conjugation:	Unconjugated
Storage:	Store at -20°C as received.
Stability:	Stable for 12 months from date of receipt.
Predicted Protein Size:	77 kDa
Gene Name:	synaptic vesicle glycoprotein 2B
Database Link:	<a href="#">NP_055663</a> <a href="#">Entrez Gene 9899 Human Q7L112</a>
Background:	Probably plays a role inThe control of regulated secretion in neural and endocrine cells.
Synonyms:	HsT19680
Note:	Immunogen Sequence Homology: Rat: 100%; Horse: 100%; Human: 100%; Mouse: 100%; Bovine: 100%; Rabbit: 100%; Pig: 93%; Guinea pig: 93%; Dog: 86%
Protein Families:	Secreted Protein, Transmembrane



[View online »](#)

Protein Pathways: ECM-receptor interaction

### Product images:



Host: Rabbit; Target Name: SV2B; Sample Tissue: HT1080 Whole Cell lysates; Antibody Dilution: 1.0 ug/ml