

Product datasheet for **TA341962**

KIAA0319 Rabbit Polyclonal Antibody

Product data:

Product Type:	Primary Antibodies
Applications:	IHC, WB
Recommended Dilution:	WB, IHC
Reactivity:	Human
Host:	Rabbit
Isotype:	IgG
Clonality:	Polyclonal
Immunogen:	The immunogen for anti-KIAA0319 antibody: synthetic peptide directed towards the N terminal of human KIAA0319. Synthetic peptide located within the following region: EEMSEYSDDYRELEKDLLQPSGKQEPRGSAEYTDWGLLPGSEGA FNSSVG
Formulation:	Liquid. Purified antibody supplied in 1x PBS buffer with 0.09% (w/v) sodium azide and 2% sucrose. <i>Note that this product is shipped as lyophilized powder to China customers.</i>
Concentration:	lot specific
Conjugation:	Unconjugated
Storage:	Store at -20°C as received.
Stability:	Stable for 12 months from date of receipt.
Predicted Protein Size:	56 kDa
Gene Name:	KIAA0319
Database Link:	NP_001161846 Entrez Gene 9856 Human Q5VV43
Background:	This gene encodes a transmembrane protein that contains a large extracellular domain with multiple polycystic kidney disease (PKD) domains. The encoded protein may play a role in the development of the cerebral cortex by regulating neuronal migration and cell adhesion. Single nucleotide polymorphisms in this gene are associated with dyslexia. Alternatively spliced transcript variants encoding multiple isoforms have been observed for this gene. [provided by RefSeq, Nov 2011]



[View online »](#)

Synonyms: DYLX2; DYX2; NMIG

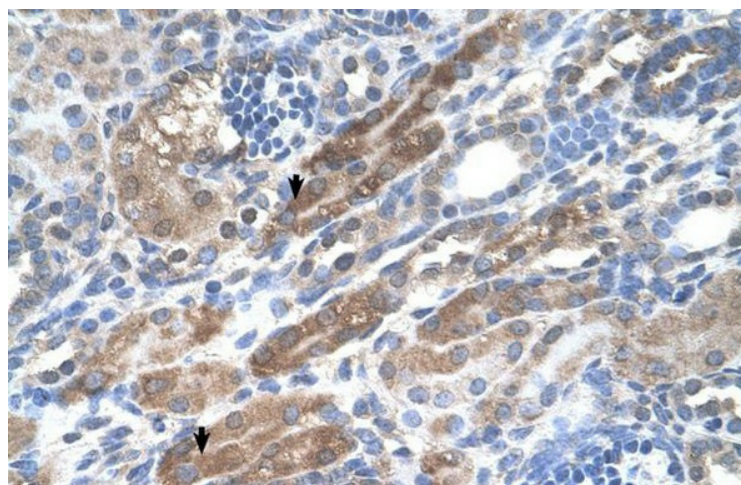
Note: Immunogen Sequence Homology: Human: 100%; Pig: 93%; Horse: 86%; Bovine: 86%; Rat: 79%; Mouse: 79%

Protein Families: Transmembrane

Product images:



WB Suggested Anti-KIAA0319 Antibody Titration: 1.25 ug/ml; Positive Control: HepG2 cell lysate



Human kidney