

## Product datasheet for **TA341959**

### Hephaestin (HEPH) Rabbit Polyclonal Antibody

#### Product data:

Product Type:	Primary Antibodies
Applications:	WB
Recommended Dilution:	WB
Reactivity:	Human
Host:	Rabbit
Isotype:	IgG
Clonality:	Polyclonal
Immunogen:	The immunogen for anti-HEPH antibody: synthetic peptide directed towards the N terminal of human HEPH. Synthetic peptide located within the following region: MHAINGFVFGNLPENMCAQKRVAWHLFGMGNEIDVHTAFFHGQMLTTRG
Formulation:	Liquid. Purified antibody supplied in 1x PBS buffer with 0.09% (w/v) sodium azide and 2% sucrose. <i>Note that this product is shipped as lyophilized powder to China customers.</i>
Concentration:	lot specific
Conjugation:	Unconjugated
Storage:	Store at -20°C as received.
Stability:	Stable for 12 months from date of receipt.
Predicted Protein Size:	100 kDa
Gene Name:	hephaestin
Database Link:	<a href="#">NP_055614</a> <a href="#">Entrez Gene 9843 Human</a> <a href="#">Q9BQS7</a>
Background:	This gene encodes a member of the multicopper oxidase protein family. The encoded protein is involved in the transport of dietary iron from epithelial cells of the intestinal lumen into the circulatory system, and may be involved in copper transport and homeostasis. In mouse, defects in this gene can lead to severe microcytic anemia. Alternative splicing results in multiple transcript variants. [provided by RefSeq, Aug 2013]
Synonyms:	CPL

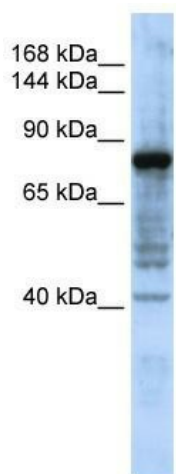


[View online »](#)

**Note:** Immunogen Sequence Homology: Rat: 100%; Human: 100%; Mouse: 100%; Dog: 93%; Pig: 93%; Horse: 93%; Sheep: 93%; Bovine: 93%; Guinea pig: 93%; Rabbit: 86%; Zebrafish: 79%

**Protein Families:** Druggable Genome, Transmembrane

**Product images:**



WB Suggested Anti-HEPH Antibody Titration: 0.2-1 ug/ml; ELISA Titer: 1: 312500; Positive Control: MCF7 cell lysate