

Product datasheet for **TA341956**

Seladin 1 (DHCR24) Rabbit Polyclonal Antibody

Product data:

Product Type:	Primary Antibodies
Applications:	WB
Recommended Dilution:	WB
Reactivity:	Human
Host:	Rabbit
Isotype:	IgG
Clonality:	Polyclonal
Immunogen:	The immunogen for anti-DHCR24 antibody: synthetic peptide directed towards the middle region of human DHCR24. Synthetic peptide located within the following region: AELYIDIGAYGEPRVKHFEARSCMRQLEKFVRSVHGFQMLYADCYMNREE
Formulation:	Liquid. Purified antibody supplied in 1x PBS buffer with 0.09% (w/v) sodium azide and 2% sucrose. <i>Note that this product is shipped as lyophilized powder to China customers.</i>
Concentration:	lot specific
Conjugation:	Unconjugated
Storage:	Store at -20°C as received.
Stability:	Stable for 12 months from date of receipt.
Predicted Protein Size:	58 kDa
Gene Name:	24-dehydrocholesterol reductase
Database Link:	NP_055577 Entrez Gene 1718 Human Q15392



[View online »](#)

Background: This gene encodes a flavin adenine dinucleotide (FAD)-dependent oxidoreductase which catalyzes the reduction of the delta-24 double bond of sterol intermediates during cholesterol biosynthesis. The protein contains a leader sequence that directs it to the endoplasmic reticulum membrane. Missense mutations in this gene have been associated with desmosterolosis. Also, reduced expression of the gene occurs in the temporal cortex of Alzheimer disease patients and overexpression has been observed in adrenal gland cancer cells. [provided by RefSeq, Jul 2008]

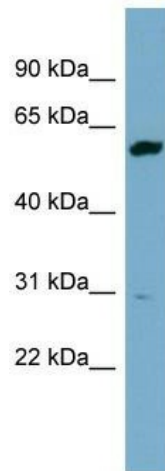
Synonyms: DCE; Nbla03646; seladin-1; SELADIN1

Note: Immunogen Sequence Homology: Dog: 100%; Pig: 100%; Rat: 100%; Horse: 100%; Human: 100%; Mouse: 100%; Bovine: 100%; Guinea pig: 100%; Zebrafish: 92%; Rabbit: 86%

Protein Families: Druggable Genome, Stem cell - Pluripotency, Transmembrane

Protein Pathways: Metabolic pathways, Steroid biosynthesis

Product images:



WB Suggested Anti-DHCR24 Antibody Titration:
0.2-1 ug/ml; ELISA Titer: 1: 312500; Positive
Control: THP-1 cell lysate