

Product datasheet for **TA341954**

PTDSS1 Rabbit Polyclonal Antibody

Product data:

Product Type:	Primary Antibodies
Applications:	WB
Recommended Dilution:	WB
Reactivity:	Human
Host:	Rabbit
Isotype:	IgG
Clonality:	Polyclonal
Immunogen:	The immunogen for anti-PTDSS1 antibody: synthetic peptide directed towards the N terminal of human PTDSS1. Synthetic peptide located within the following region: MASCVGSRTLKDDVNYKMHFRMINEQQVEDITIDFFYRPHTITLLSFTI
Formulation:	Liquid. Purified antibody supplied in 1x PBS buffer with 0.09% (w/v) sodium azide and 2% sucrose. <i>Note that this product is shipped as lyophilized powder to China customers.</i>
Concentration:	lot specific
Conjugation:	Unconjugated
Storage:	Store at -20°C as received.
Stability:	Stable for 12 months from date of receipt.
Predicted Protein Size:	55 kDa
Gene Name:	phosphatidylserine synthase 1
Database Link:	NP_055569 Entrez Gene 9791 Human P48651
Background:	The protein encoded byThis gene catalyzesThe formation of phosphatidylserine from either phosphatidylcholine or phosphatidylethanolamine. Phosphatidylserine localizes toThe mitochondria-associated membrane ofThe endoplasmic reticulum, where it serves a structural role as well as a signaling role. Defects inThis gene are a cause of Lenz-Majewski hyperostotic dwarfism. Two transcript variants encoding different isoforms have been found forThis gene. [provided by RefSeq, Mar 2014]



[View online »](#)

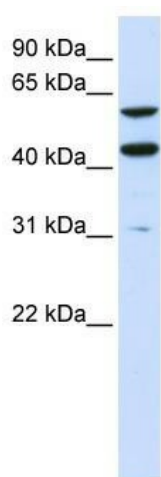
Synonyms: LMHD; PSS1; PSSA

Note: Immunogen Sequence Homology: Dog: 100%; Pig: 100%; Rat: 100%; Human: 100%; Mouse: 100%; Bovine: 100%; Zebrafish: 91%

Protein Families: Transmembrane

Protein Pathways: Glycerophospholipid metabolism, Metabolic pathways

Product images:



WB Suggested Anti-PTDSS1 Antibody Titration:
0.2-1 ug/ml; ELISA Titer: 1: 62500; Positive
Control: 293T cell lysate