

## Product datasheet for **TA341952**

### **KIAA0247 (SUSD6) Rabbit Polyclonal Antibody**

#### **Product data:**

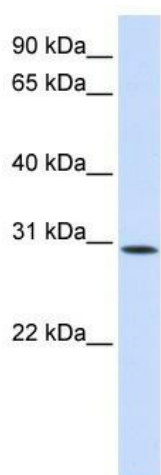
<b>Product Type:</b>	Primary Antibodies
<b>Applications:</b>	WB
<b>Recommended Dilution:</b>	WB
<b>Reactivity:</b>	Human
<b>Host:</b>	Rabbit
<b>Isotype:</b>	IgG
<b>Clonality:</b>	Polyclonal
<b>Immunogen:</b>	The immunogen for anti-KIAA0247 antibody: synthetic peptide directed towards the N terminal of human KIAA0247. Synthetic peptide located within the following region: YLCAEGYMLKGDYKYLTKNGEWKPAMEISCRLNEDKDTHTSLGVPTLSI
<b>Formulation:</b>	Liquid. Purified antibody supplied in 1x PBS buffer with 0.09% (w/v) sodium azide and 2% sucrose. <i>Note that this product is shipped as lyophilized powder to China customers.</i>
<b>Concentration:</b>	lot specific
<b>Conjugation:</b>	Unconjugated
<b>Storage:</b>	Store at -20°C as received.
<b>Stability:</b>	Stable for 12 months from date of receipt.
<b>Predicted Protein Size:</b>	32 kDa
<b>Gene Name:</b>	sushi domain containing 6
<b>Database Link:</b>	<a href="#">NP_055549</a> <a href="#">Entrez Gene 9766 Human Q92537</a>
<b>Background:</b>	KIAA0247 is a single-pass type I membrane protein. It contains 1 Sushi (CCP/SCR) domain. The function of the KIAA0247 protein remains unknown.
<b>Synonyms:</b>	DRAGO; KIAA0247
<b>Note:</b>	Immunogen Sequence Homology: Human: 100%; Rabbit: 100%; Dog: 93%; Pig: 93%; Rat: 93%; Horse: 93%; Bovine: 93%; Guinea pig: 93%



[View online »](#)

Protein Families: Transmembrane

### Product images:



WB Suggested Anti-KIAA0247 Antibody Titration:  
0.2-1 ug/ml; ELISA Titer: 1: 312500; Positive  
Control: Human Liver