

Product datasheet for **TA341951**

CLSTN3 Rabbit Polyclonal Antibody

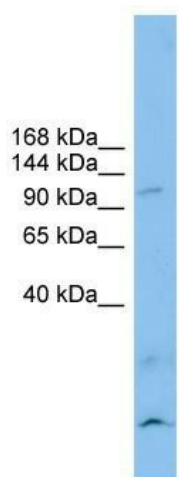
Product data:

Product Type:	Primary Antibodies
Applications:	WB
Recommended Dilution:	WB
Reactivity:	Human
Host:	Rabbit
Isotype:	IgG
Clonality:	Polyclonal
Immunogen:	The immunogen for anti-CLSTN3 antibody: synthetic peptide directed towards the N terminal of human CLSTN3. Synthetic peptide located within the following region: QICYEILTPNTPFLIDNDGNIENTEKLQYSGERLYKFTVTAYDCGKKRA
Formulation:	Liquid. Purified antibody supplied in 1x PBS buffer with 0.09% (w/v) sodium azide and 2% sucrose.
Concentration:	lot specific
Conjugation:	Unconjugated
Storage:	Store at -20°C as received.
Stability:	Stable for 12 months from date of receipt.
Predicted Protein Size:	106 kDa
Gene Name:	calsyntenin 3
Database Link:	NP_055533 Entrez Gene 9746 Human Q9BQT9
Background:	May modulate calcium-mediated postsynaptic signals (By similarity). Complex formation with APBA2 and APP, stabilizes APP metabolism and enhances APBA2-mediated suppression of beta-APP40 secretion, due toThe retardation of intracellular APP maturation.
Synonyms:	alcbeta; CDHR14; CSTN3
Note:	Immunogen Sequence Homology: Dog: 100%; Pig: 100%; Rat: 100%; Horse: 100%; Human: 100%; Mouse: 100%; Bovine: 100%; Rabbit: 100%; Guinea pig: 100%



[View online »](#)

Protein Families: Transmembrane

Product images:

WB Suggested Anti-CLSTN3 Antibody Titration:
0.2-1 ug/ml; ELISA Titer: 1: 62500; Positive
Control: RPMI 8226 cell lysate