

## Product datasheet for **TA341950**

### LAPTM4A Rabbit Polyclonal Antibody

#### Product data:

Product Type:	Primary Antibodies
Applications:	WB
Recommended Dilution:	WB
Reactivity:	Human
Host:	Rabbit
Isotype:	IgG
Clonality:	Polyclonal
Immunogen:	The immunogen for anti-LAPTM4A antibody: synthetic peptide directed towards the middle region of human LAPTM4A. Synthetic peptide located within the following region: VLSCLVAISSLTYLPRRIKEYLDQLPDFPYKDDLLALDSSCLLFIVLVFFA
Formulation:	Liquid. Purified antibody supplied in 1x PBS buffer with 0.09% (w/v) sodium azide and 2% sucrose. <i>Note that this product is shipped as lyophilized powder to China customers.</i>
Concentration:	lot specific
Conjugation:	Unconjugated
Storage:	Store at -20°C as received.
Stability:	Stable for 12 months from date of receipt.
Predicted Protein Size:	27 kDa
Gene Name:	lysosomal protein transmembrane 4 alpha
Database Link:	<a href="#">NP_055528</a> <a href="#">Entrez Gene 9741 Human Q15012</a>
Background:	This gene encodes a protein that has four predicted transmembrane domains. The function of this gene has not yet been determined; however, studies in the mouse homolog suggest a role in the transport of small molecules across endosomal and lysosomal membranes. [provided by RefSeq, Jul 2008]
Synonyms:	HUMORF13; LAPTM4; MBNT; Mtrp



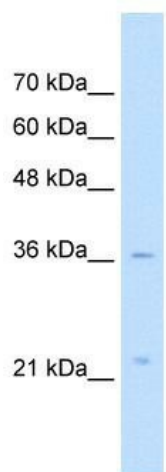
[View online »](#)

**Note:** Immunogen Sequence Homology: Dog: 100%; Pig: 100%; Rat: 100%; Horse: 100%; Human: 100%; Mouse: 100%; Bovine: 100%; Rabbit: 100%; Guinea pig: 100%; Zebrafish: 93%

**Protein Families:** Transmembrane

**Protein Pathways:** Lysosome

### Product images:



WB Suggested Anti-LAPTM4A Antibody Titration: 5.0 ug/ml; Positive Control: HepG2 cell lysate. LAPTM4A is supported by BioGPS gene expression data to be expressed in HepG2