

Product datasheet for **TA341948**

Syndecan 3 (SDC3) Rabbit Polyclonal Antibody

Product data:

Product Type:	Primary Antibodies
Applications:	WB
Recommended Dilution:	WB
Reactivity:	Mouse
Host:	Rabbit
Isotype:	IgG
Clonality:	Polyclonal
Immunogen:	The immunogen for anti-Sdc3 antibody: synthetic peptide corresponding to a region of Mouse. Synthetic peptide located within the following region: GLLLPLLLLLLLAGRAAGAQRWRNENFERPVDLESGDDDSFPDDELDDL
Formulation:	Liquid. Purified antibody supplied in 1x PBS buffer with 0.09% (w/v) sodium azide and 2% sucrose. <i>Note that this product is shipped as lyophilized powder to China customers.</i>
Concentration:	lot specific
Conjugation:	Unconjugated
Storage:	Store at -20°C as received.
Stability:	Stable for 12 months from date of receipt.
Predicted Protein Size:	46 kDa
Gene Name:	syndecan 3
Database Link:	NP_055469 Entrez Gene 20970 Mouse O75056
Background:	Cell surface proteoglycan that may bear heparan sulfate. May have a role inThe organization of cell shape by affectingThe actin cytoskeleton, possibly by transferring signals fromThe cell surface in a sugar-dependent mechanism.
Synonyms:	SDCN; SYND3
Note:	Immunogen Sequence Homology: Dog: 100%; Pig: 100%; Rat: 100%; Horse: 100%; Human: 100%; Mouse: 100%; Bovine: 100%; Rabbit: 100%; Guinea pig: 100%

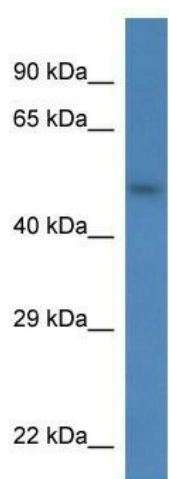


[View online »](#)

Protein Families: Transmembrane

Protein Pathways: Cell adhesion molecules (CAMs), ECM-receptor interaction

Product images:



WB Suggested Anti-Sdc3 Antibody; Titration: 1.0 ug/ml; Positive Control: Mouse Heart