

## Product datasheet for **TA341945**

### ERVWE1 (ERVW-1) Rabbit Polyclonal Antibody

#### Product data:

Product Type:	Primary Antibodies
Applications:	WB
Recommended Dilution:	WB
Reactivity:	Human
Host:	Rabbit
Isotype:	IgG
Clonality:	Polyclonal
Immunogen:	The immunogen for Anti-ERVW-1 antibody is: synthetic peptide directed towards the N-terminal region of Human ERVW-1. Synthetic peptide located within the following region: CMTSSSPYQEFLWRMQRPGNIDAPSYRSLSKGTPFTTAHTHMPRNCYHSA
Formulation:	Liquid. Purified antibody supplied in 1x PBS buffer with 0.09% (w/v) sodium azide and 2% sucrose. <i>Note that this product is shipped as lyophilized powder to China customers.</i>
Concentration:	lot specific
Purification:	Affinity Purified
Conjugation:	Unconjugated
Storage:	Store at -20°C as received.
Stability:	Stable for 12 months from date of receipt.
Predicted Protein Size:	59 kDa
Gene Name:	endogenous retrovirus group W member 1
Database Link:	<a href="#">NP_055405</a> <a href="#">Entrez Gene 30816 Human</a> <a href="#">Q9UQF0</a>



[View online »](#)

**Background:**

Many different human endogenous retrovirus (HERV) families are expressed in normal placental tissue at high levels, suggesting that HERVs are functionally important in reproduction. This gene is part of an HERV provirus on chromosome 7 that has inactivating mutations in the gag and pol genes. This gene is the envelope glycoprotein gene which appears to have been selectively preserved. The gene's protein product is expressed in the placental syncytiotrophoblast and is involved in fusion of the cytotrophoblast cells to form the syncytial layer of the placenta. The protein has the characteristics of a typical retroviral envelope protein, including a furin cleavage site that separates the surface (SU) and transmembrane (TM) proteins which form a heterodimer. Alternatively spliced transcript variants encoding the same protein have been found for this gene. [provided by RefSeq, Mar 2010]

**Synonyms:**

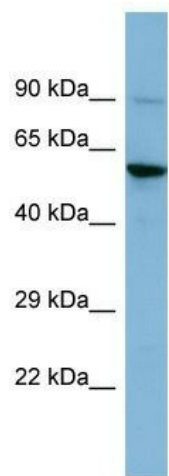
ENV; ENVW; ERVWE1; HERV-7q; HERV-W-ENV; HERV7Q; HERVW; HERVWENV

**Note:**

Immunogen Sequence Homology: Human: 100%; Rat: 86%

**Protein Families:**

Transmembrane

**Product images:**

Host: Rabbit; Target Name: ERVW-1; Sample Tissue: HT1080 Whole Cell lysates; Antibody Dilution: 1.0 ug/ml