

Product datasheet for **TA341941**

Torsin B (TOR1B) Rabbit Polyclonal Antibody

Product data:

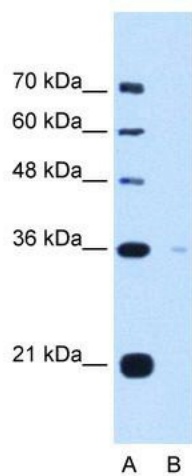
Product Type:	Primary Antibodies
Applications:	WB
Recommended Dilution:	WB
Reactivity:	Human
Host:	Rabbit
Isotype:	IgG
Clonality:	Polyclonal
Immunogen:	The immunogen for anti-TOR1B antibody: synthetic peptide directed towards the C terminal of human TOR1B. Synthetic peptide located within the following region: VFNNKHSGLWHSGLIDKNLIDYFIPFLPLEYRHVKMCVRAEMRARGSAID
Formulation:	Liquid. Purified antibody supplied in 1x PBS buffer with 0.09% (w/v) sodium azide and 2% sucrose. <i>Note that this product is shipped as lyophilized powder to China customers.</i>
Concentration:	lot specific
Conjugation:	Unconjugated
Storage:	Store at -20°C as received.
Stability:	Stable for 12 months from date of receipt.
Predicted Protein Size:	38 kDa
Gene Name:	torsin family 1 member B
Database Link:	NP_055321 Entrez Gene 27348 Human O14657
Background:	TOR1B may serve as a molecular chaperone assisting inThe proper folding of secreted and/or membrane proteins.
Synonyms:	DQ1
Note:	Immunogen Sequence Homology: Rat: 100%; Human: 100%; Mouse: 100%; Dog: 93%; Bovine: 93%; Pig: 86%; Horse: 86%; Guinea pig: 86%; Rabbit: 85%; Zebrafish: 79%



[View online »](#)

Protein Families: Transmembrane

Product images:



WB Suggested Anti-TOR1B Antibody Titration: 5.0 ug/ml; Positive Control: HepG2 cell lysate