

Product datasheet for **TA341939**

BMP10 Rabbit Polyclonal Antibody

Product data:

Product Type:	Primary Antibodies
Applications:	WB
Recommended Dilution:	WB
Reactivity:	Rat
Host:	Rabbit
Isotype:	IgG
Clonality:	Polyclonal
Immunogen:	The immunogen for anti-Bmp10 antibody: synthetic peptide corresponding to a region of Rat. Synthetic peptide located within the following region: KFATDRTSMPSANIIRSFKNEDLFSQPVSFNGIRKYPLLFNVSIPHHEEV
Formulation:	Liquid. Purified antibody supplied in 1x PBS buffer with 0.09% (w/v) sodium azide and 2% sucrose. <i>Note that this product is shipped as lyophilized powder to China customers.</i>
Concentration:	lot specific
Conjugation:	Unconjugated
Storage:	Store at -20°C as received.
Stability:	Stable for 12 months from date of receipt.
Predicted Protein Size:	48 kDa
Gene Name:	bone morphogenetic protein 10
Database Link:	NP_055297 Entrez Gene 500245 Rat O95393
Background:	Bmp10 is required for maintainingThe proliferative activity of embryonic cardiomyocytes by preventing premature activation ofThe negative cell cycle regulator CDKN1C/p57KIP and maintainingThe required expression levels of cardiogenic factors such as MEF2C and NKX2-5. Bmp10 acts as a ligand for ACVRL1/ALK1, BMPR1A/ALK3 and BMPR1B/ALK6, leading to activation of SMAD1, SMAD5 and SMAD8 transcription factors. Bmp10 inhibits endothelial cell migration and growth.



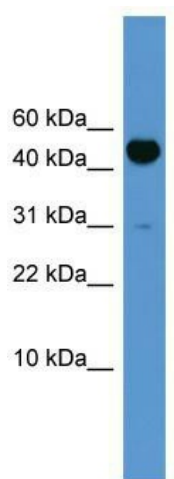
[View online »](#)

Synonyms: MGC126783

Note: Immunogen Sequence Homology: Dog: 100%; Pig: 100%; Rat: 100%; Human: 100%; Mouse: 100%; Rabbit: 100%; Zebrafish: 100%; Guinea pig: 100%; Horse: 93%; Bovine: 93%

Protein Families: Druggable Genome, Secreted Protein, Transmembrane

Product images:



WB Suggested Anti-Bmp10 Antibody Titration:
0.2-1 ug/ml; ELISA Titer: 1: 312500; Positive
Control: Rat Brain