

Product datasheet for **TA341936**

MICS1 (GHITM) Rabbit Polyclonal Antibody

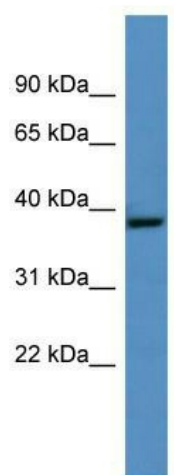
Product data:

Product Type:	Primary Antibodies
Applications:	WB
Recommended Dilution:	WB
Reactivity:	Mouse
Host:	Rabbit
Isotype:	IgG
Clonality:	Polyclonal
Immunogen:	The immunogen for anti-Ghitm antibody: synthetic peptide corresponding to a region of Mouse. Synthetic peptide located within the following region: WVTIGATFAAMIGAGMLVHSISYEQSPGPKHLAWMLHSGVMGAVVAPLTI
Formulation:	Liquid. Purified antibody supplied in 1x PBS buffer with 0.09% (w/v) sodium azide and 2% sucrose.
Concentration:	lot specific
Conjugation:	Unconjugated
Storage:	Store at -20°C as received.
Stability:	Stable for 12 months from date of receipt.
Predicted Protein Size:	37 kDa
Gene Name:	growth hormone inducible transmembrane protein
Database Link:	NP_055209 Entrez Gene 66092 Mouse Q9H3K2
Background:	Required forThe mitochondrial tubular network and cristae organization. Involved in apoptotic release of cytochrome c.
Synonyms:	DERP2; HSPC282; MICS1; My021; PTD010; TMBIM5
Note:	Immunogen Sequence Homology: Horse: 100%; Human: 100%; Dog: 93%; Pig: 86%; Rat: 86%; Goat: 86%; Mouse: 86%; Bovine: 86%; Rabbit: 86%; Guinea pig: 86%
Protein Families:	Transmembrane



[View online »](#)

Product images:



WB Suggested Anti-Ghitm Antibody Titration: 0.2-1 ug/ml; ELISA Titer: 1: 62500; Positive Control: Mouse Liver