

Product datasheet for **TA341935**

Siglec 7 (SIGLEC7) Rabbit Polyclonal Antibody

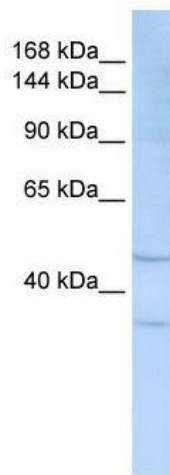
Product data:

Product Type:	Primary Antibodies
Applications:	WB
Recommended Dilution:	WB
Reactivity:	Human
Host:	Rabbit
Isotype:	IgG
Clonality:	Polyclonal
Immunogen:	The immunogen for anti-SIGLEC7 antibody: synthetic peptide directed towards the middle region of human SIGLEC7. Synthetic peptide located within the following region: WRSULTYPSQPSNPLVLELQVHLGDEGEFTCRAQNSLGSQHVSLNLSLQQ
Formulation:	Liquid. Purified antibody supplied in 1x PBS buffer with 0.09% (w/v) sodium azide and 2% sucrose. <i>Note that this product is shipped as lyophilized powder to China customers.</i>
Concentration:	lot specific
Conjugation:	Unconjugated
Storage:	Store at -20°C as received.
Stability:	Stable for 12 months from date of receipt.
Predicted Protein Size:	51 kDa
Gene Name:	sialic acid binding Ig like lectin 7
Database Link:	NP_055200 Entrez Gene 27036 Human Q9Y286



[View online »](#)

Background:	SIGLEC7 is a putative adhesion molecule that mediates sialic-acid dependent binding to cells. InThe immune response, it may act as an inhibitory receptor upon ligand induced tyrosine phosphorylation by recruiting cytoplasmic phosphatase(s) viaTheir SH2 domain(s) that block signal transduction through dephosphorylation of signaling molecules. SIGLEC7 mediates inhibition of natural killer cells cytotoxicity. It may also play a role in hemopoiesis. SIGLEC7 inhibits differentiation of CD34+ cell precursors towards myelomonocytic cell lineage and proliferation of leukemic myeloid cells (in vitro).
Synonyms:	AIRM1; CD328; CDw328; D-siglec; p75; QA79; SIGLEC-7; SIGLEC19P; SIGLECP2
Note:	Immunogen Sequence Homology: Dog: 100%; Human: 100%; Horse: 92%; Pig: 86%; Guinea pig: 86%; Bovine: 85%
Protein Families:	Druggable Genome, ES Cell Differentiation/IPS, Transmembrane

Product images:

WB Suggested Anti-SIGLEC7 Antibody Titration: 0.2-1 ug/ml; ELISA Titer: 1: 62500; Positive Control: 721_B cell lysate. SIGLEC7 is strongly supported by BioGPS gene expression data to be expressed in Human 721_B cells