

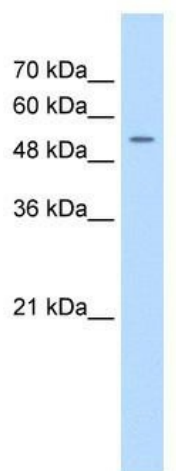
Product datasheet for **TA341933**

FJX1 Rabbit Polyclonal Antibody

Product data:

Product Type:	Primary Antibodies
Applications:	WB
Recommended Dilution:	WB
Reactivity:	Human
Host:	Rabbit
Isotype:	IgG
Clonality:	Polyclonal
Immunogen:	The immunogen for anti-FJX1 antibody: synthetic peptide directed towards the N terminal of human FJX1. Synthetic peptide located within the following region: MVALERGGCGRSSNRLARFADGTRACVRYGINPEQIQGEALSYLLARLLG
Formulation:	Liquid. Purified antibody supplied in 1x PBS buffer with 0.09% (w/v) sodium azide and 2% sucrose.
Concentration:	lot specific
Conjugation:	Unconjugated
Storage:	Store at -20°C as received.
Stability:	Stable for 12 months from date of receipt.
Predicted Protein Size:	48 kDa
Gene Name:	four jointed box 1
Database Link:	NP_055159 Entrez Gene 24147 Human Q86VR8
Background:	The protein encoded byThis gene isThe human ortholog of mouse and Drosophila four-jointed gene product.The Drosophila protein is important for growth and differentiation of legs and wings, and for proper development ofThe eyes.The exact function ofThis gene in humans is not known. [provided by RefSeq, Jul 2008]
Synonyms:	FLJ22416; FLJ25593
Note:	Immunogen Sequence Homology: Pig: 100%; Rat: 100%; Human: 100%; Mouse: 100%; Guinea pig: 100%; Dog: 79%


[View online »](#)

Product images:


WB Suggested Anti-FJX1 Antibody Titration: 0.2-1 ug/ml; Positive Control: Jurkat cell lysate