

Product datasheet for **TA341932**

MTCH1 Rabbit Polyclonal Antibody

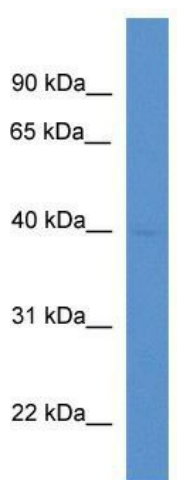
Product data:

Product Type:	Primary Antibodies
Applications:	WB
Recommended Dilution:	WB
Reactivity:	Rat
Host:	Rabbit
Isotype:	IgG
Clonality:	Polyclonal
Immunogen:	The immunogen for anti-Mtch1 antibody: synthetic peptide corresponding to a region of Rat. Synthetic peptide located within the following region: MSNALSTVTRGSMKKVFPPDEIEQVSNKDDMKTSLKKVKETSYEMMMQC
Formulation:	Liquid. Purified antibody supplied in 1x PBS buffer with 0.09% (w/v) sodium azide and 2% sucrose.
Concentration:	lot specific
Conjugation:	Unconjugated
Storage:	Store at -20°C as received.
Stability:	Stable for 12 months from date of receipt.
Predicted Protein Size:	41 kDa
Gene Name:	mitochondrial carrier 1
Database Link:	NP_055156 Entrez Gene 294313 Rat Q9NZJ7
Background:	MTCH1 is a potential mitochondrial transporter. It may play a role in apoptosis.
Synonyms:	CGI-64; PIG60; PSAP; SLC25A49
Note:	Immunogen Sequence Homology: Pig: 100%; Rat: 100%; Horse: 100%; Human: 100%; Bovine: 100%; Guinea pig: 100%; Dog: 93%; Mouse: 93%; Rabbit: 93%
Protein Families:	Transmembrane



[View online »](#)

Product images:



WB Suggested Anti-Mtch1 Antibody Titration: 0.2-1 ug/ml; ELISA Titer: 1: 1562500; Positive Control: Rat Heart