

Product datasheet for TA341931

MTCH1 Rabbit Polyclonal Antibody

Product data:

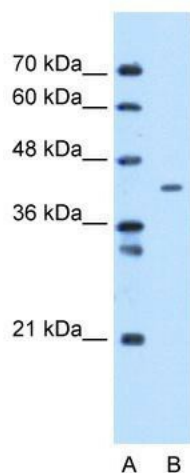
Product Type:	Primary Antibodies
Applications:	WB
Recommended Dilution:	WB
Reactivity:	Human
Host:	Rabbit
Isotype:	IgG
Clonality:	Polyclonal
Immunogen:	The immunogen for anti-MTCH1 antibody: synthetic peptide directed towards the C terminal of human MTCH1. Synthetic peptide located within the following region: NNCGLQAGLPPYSPVFKSWIHCWKYLSVQGQLFRGSSLLFRRVSSGSCFA
Formulation:	Liquid. Purified antibody supplied in 1x PBS buffer with 0.09% (w/v) sodium azide and 2% sucrose.
Concentration:	lot specific
Conjugation:	Unconjugated
Storage:	Store at -20°C as received.
Stability:	Stable for 12 months from date of receipt.
Predicted Protein Size:	40 kDa
Gene Name:	mitochondrial carrier 1
Database Link:	NP_055156 Entrez Gene 23787 Human Q9NZJ7
Background:	This gene encodes a member ofThe mitochondrial carrier family.The encoded protein is localized toThe mitochondrion inner membrane and induces apoptosis independent ofThe proapoptotic proteins Bax and Bak. Pseudogenes on chromosomes 6 and 11 have been identified forThis gene. Alternatively spliced transcript variants encoding multiple isoforms have been observed. [provided by RefSeq, Oct 2012]
Synonyms:	CGI-64; PIG60; PSAP; SLC25A49


[View online »](#)

Note: Immunogen Sequence Homology: Dog: 100%; Pig: 100%; Rat: 100%; Horse: 100%; Human: 100%; Mouse: 100%; Bovine: 100%; Rabbit: 100%; Guinea pig: 93%

Protein Families: Transmembrane

Product images:



WB Suggested Anti-MTCH1 Antibody Titration: 0.2-1 ug/ml; Positive Control: HepG2 cell lysate. MTCH1 is supported by BioGPS gene expression data to be expressed in HepG2