

## Product datasheet for TA341929

### C9ORF4 (FRRS1L) Rabbit Polyclonal Antibody

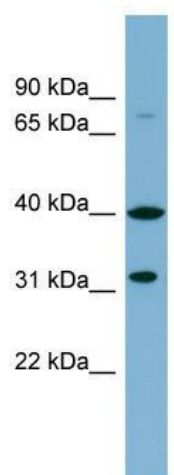
#### Product data:

Product Type:	Primary Antibodies
Applications:	WB
Recommended Dilution:	WB
Reactivity:	Human
Host:	Rabbit
Isotype:	IgG
Clonality:	Polyclonal
Immunogen:	The immunogen for anti-C9orf4 antibody: synthetic peptide directed towards the middle region of human C9orf4. Synthetic peptide located within the following region: HDDNGRVRIQHFYNVGQWAKEIQRNPARDEEGVFENNRVTCRFRKRPVNVP
Formulation:	Liquid. Purified antibody supplied in 1x PBS buffer with 0.09% (w/v) sodium azide and 2% sucrose.
Concentration:	lot specific
Conjugation:	Unconjugated
Storage:	Store at -20°C as received.
Stability:	Stable for 12 months from date of receipt.
Predicted Protein Size:	37 kDa
Gene Name:	ferric chelate reductase 1 like
Database Link:	<a href="#">NP_055149</a> <a href="#">Entrez Gene 23732 Human</a> <a href="#">Q9P0K9</a>
Background:	The exact function of C9orf4 remains unknown.
Synonyms:	C9orf4; CG-6; CG6
Note:	Immunogen Sequence Homology: Dog: 100%; Pig: 100%; Rat: 100%; Horse: 100%; Human: 100%; Mouse: 100%; Bovine: 100%; Rabbit: 100%; Guinea pig: 93%; Zebrafish: 92%
Protein Families:	Transmembrane



[View online »](#)

## Product images:



WB Suggested Anti-C9orf4 Antibody Titration: 0.2-1 ug/ml; ELISA Titer: 1: 312500; Positive Control: ACHN cell lysate