

Product datasheet for **TA341927**

ASTN2 Rabbit Polyclonal Antibody

Product data:

Product Type:	Primary Antibodies
Applications:	WB
Recommended Dilution:	WB
Reactivity:	Human
Host:	Rabbit
Isotype:	IgG
Clonality:	Polyclonal
Immunogen:	The immunogen for anti-ASTN2 antibody: synthetic peptide directed towards the N terminal of human ASTN2. Synthetic peptide located within the following region: LLFVRNELPGRIAVQDDLDNTELPFFTLEMSGTAADISLVHWRQQWLENG
Formulation:	Liquid. Purified antibody supplied in 1x PBS buffer with 0.09% (w/v) sodium azide and 2% sucrose. <i>Note that this product is shipped as lyophilized powder to China customers.</i>
Concentration:	lot specific
Conjugation:	Unconjugated
Storage:	Store at -20°C as received.
Stability:	Stable for 12 months from date of receipt.
Predicted Protein Size:	142 kDa
Gene Name:	astrotactin 2
Database Link:	NP_054729 Entrez Gene 23245 Human O75129
Background:	This gene encodes a protein that is expressed inThe brain and may function in neuronal migration, based on functional studies ofThe related astrotactin 1 gene in human and mouse. A deletion atThis locus has been associated with schizophrenia. Multiple transcript variants encoding different proteins have been found forThis locus. [provided by RefSeq, May 2010]
Synonyms:	bA67K19.1

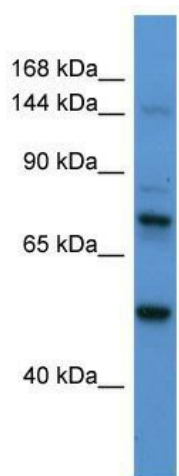


[View online »](#)

Note: Immunogen Sequence Homology: Pig: 100%; Rat: 100%; Human: 100%; Mouse: 100%; Guinea pig: 100%

Protein Families: Transmembrane

Product images:



WB Suggested Anti-ASTN2 Antibody Titration: 0.2-1 ug/ml; ELISA Titer: 1: 62500; Positive Control: Human Liver