

## Product datasheet for **TA341923**

### Myoferlin (MYOF) Rabbit Polyclonal Antibody

#### Product data:

Product Type:	Primary Antibodies
Applications:	WB
Recommended Dilution:	WB
Reactivity:	Human
Host:	Rabbit
Isotype:	IgG
Clonality:	Polyclonal
Immunogen:	The immunogen for anti-FER1L3 antibody: synthetic peptide directed towards the C terminal of human FER1L3. Synthetic peptide located within the following region: QTEFRIPRLIIQIWDNDKFSLDDYLGFLDLRHTIIPAKSPEKRLDM
Formulation:	Liquid. Purified antibody supplied in 1x PBS buffer with 0.09% (w/v) sodium azide and 2% sucrose. <i>Note that this product is shipped as lyophilized powder to China customers.</i>
Concentration:	lot specific
Conjugation:	Unconjugated
Storage:	Store at -20°C as received.
Stability:	Stable for 12 months from date of receipt.
Predicted Protein Size:	235 kDa
Gene Name:	myoferlin
Database Link:	<a href="#">NP_038479</a> <a href="#">Entrez Gene 26509 Human</a> <a href="#">Q9NZM1</a>



[View online »](#)

**Background:** Mutations in dysferlin, a protein associated with the plasma membrane, can cause muscle weakness that affects both proximal and distal muscles. The protein encoded by this gene is a type II membrane protein that is structurally similar to dysferlin. It is a member of the ferlin family and associates with both plasma and nuclear membranes. The protein contains C2 domains that play a role in calcium-mediated membrane fusion events, suggesting that it may be involved in membrane regeneration and repair. Two transcript variants encoding different isoforms have been found for this gene. Other possible variants have been detected, but their full-length nature has not been determined. [provided by RefSeq, Dec 2008]

**Synonyms:** FER1L3

**Note:** Immunogen Sequence Homology: Human: 100%; Dog: 93%; Pig: 93%; Rat: 93%; Mouse: 93%; Rabbit: 93%; Guinea pig: 93%; Horse: 86%; Bovine: 86%; Zebrafish: 79%

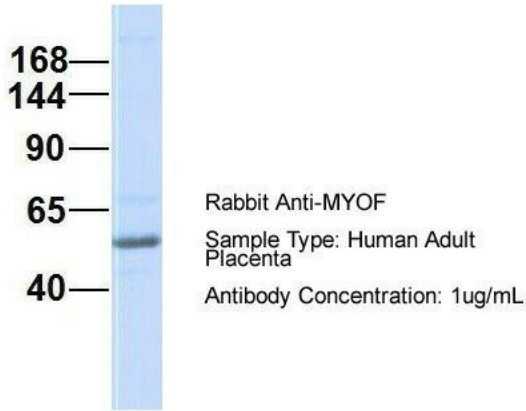
**Protein Families:** Transmembrane

### Product images:



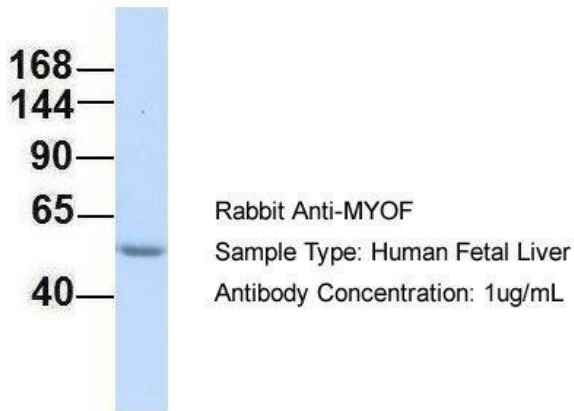
WB Suggested Anti-FER1L3 Antibody Titration: 0.2-1 ug/ml; ELISA Titer: 1: 312500; Positive Control: MCF7 cell lysate. MYOF is strongly supported by BioGPS gene expression data to be expressed in MCF7

### MYOF



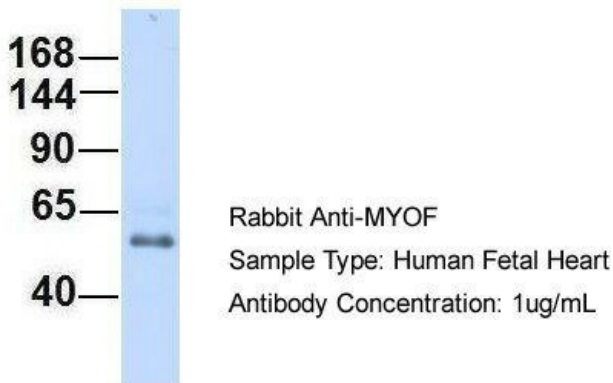
2Hum. Adult Placenta; Host: Rabbit; Target Name: CHAD; Sample Tissue: Human Adult Placenta; Antibody Dilution: 1.0 ug/ml

### MYOF



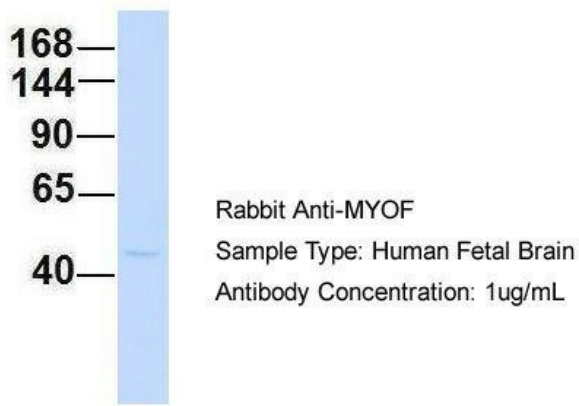
Host: Rabbit; Target Name: MYOF; Sample Tissue: Human Fetal Liver; Antibody Dilution: 1.0 ug/ml

### MYOF



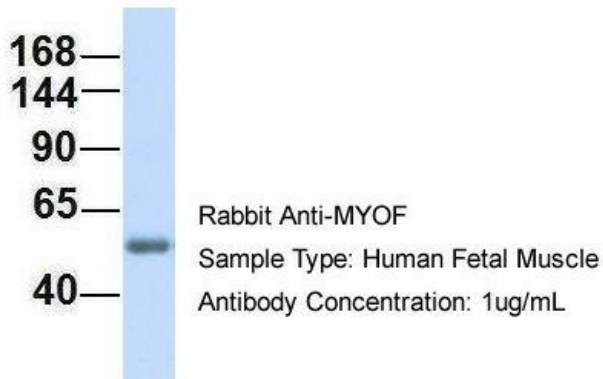
Host: Rabbit; Target Name: MYOF; Sample Tissue: Human Fetal Heart; Antibody Dilution: 1.0 ug/ml

## MYOF



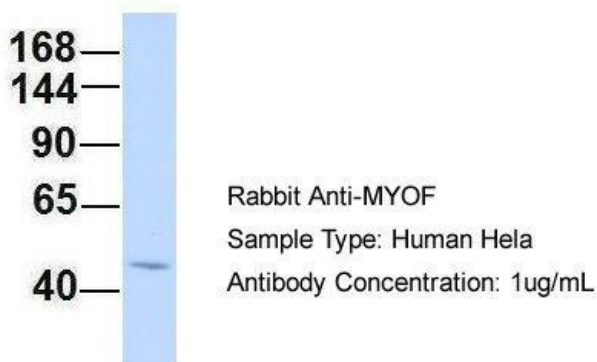
Host: Rabbit; Target Name: MYOF; Sample Tissue: Human Fetal Brain; Antibody Dilution: 1.0 ug/ml

## MYOF



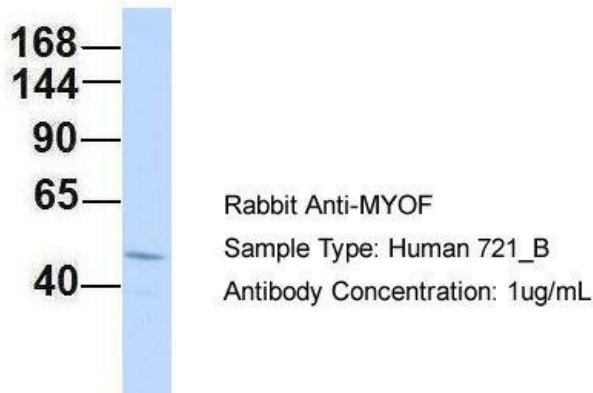
Host: Rabbit; Target Name: MYOF; Sample Tissue: Human Fetal Muscle; Antibody Dilution: 1.0 ug/ml

## MYOF



Host: Rabbit; Target Name: MYOF; Sample Tissue: HeLa; Antibody Dilution: 1.0 ug/ml. MYOF is strongly supported by BioGPS gene expression data to be expressed in HeLa

# MYOF



Host: Rabbit; Target Name: MYOF; Sample Tissue: 721\_B; Antibody Dilution: 1.0 ug/ml; MYOF is strongly supported by BioGPS gene expression data to be expressed in Human 721\_B cells