

Product datasheet for **TA341920**

PILRB Rabbit Polyclonal Antibody

Product data:

Product Type:	Primary Antibodies
Applications:	WB
Recommended Dilution:	WB
Reactivity:	Human
Host:	Rabbit
Isotype:	IgG
Clonality:	Polyclonal
Immunogen:	The immunogen for anti-PILRB antibody: synthetic peptide directed towards the middle region of human PILRB. Synthetic peptide located within the following region: KLTITQAVTTTTWRPSSTTTIAGLRVTESKGHSESWHLSLDTAIRVALA
Formulation:	Liquid. Purified antibody supplied in 1x PBS buffer with 0.09% (w/v) sodium azide and 2% sucrose.
Concentration:	lot specific
Conjugation:	Unconjugated
Storage:	Store at -20°C as received.
Stability:	Stable for 12 months from date of receipt.
Predicted Protein Size:	23 kDa
Gene Name:	paired immunoglobulin-like type 2 receptor beta
Database Link:	NP_038468 Entrez Gene 29990 Human Q9UKJ0



[View online »](#)

Background:

The paired immunoglobulin-like type 2 receptors consist of highly related activating and inhibitory receptors that are involved in the regulation of many aspects of the immune system. The paired immunoglobulin-like receptor genes are located in a tandem head-to-tail orientation on chromosome 7. This gene encodes the activating member of the receptor pair and contains a truncated cytoplasmic tail relative to its inhibitory counterpart (PILRA), that has a long cytoplasmic tail with immunoreceptor tyrosine-based inhibitory (ITIM) motifs. This gene is thought to have arisen from a duplication of the inhibitory PILRA gene and evolved to acquire its activating function. [provided by RefSeq, Jun 2013]

Synonyms:

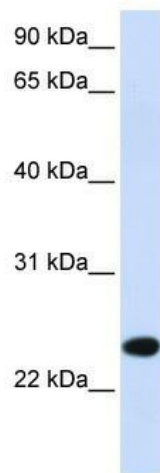
FDFACT1; FDFACT2

Note:

Immunogen Sequence Homology: Human: 100%

Protein Families:

Druggable Genome, Transmembrane

Product images:

WB Suggested Anti-PILRB Antibody Titration: 0.2-1 ug/ml; ELISA Titer: 1: 312500; Positive Control: Human Muscle