

## Product datasheet for **TA341918**

### POMT2 Rabbit Polyclonal Antibody

#### Product data:

Product Type:	Primary Antibodies
Applications:	WB
Recommended Dilution:	WB
Reactivity:	Human
Host:	Rabbit
Isotype:	IgG
Clonality:	Polyclonal
Immunogen:	The immunogen for anti-POMT2 antibody: synthetic peptide directed towards the middle region of human POMT2. Synthetic peptide located within the following region: AIGYLHSHRHLYPEGIGARQQVTTYLHKDYNNLWIIKKHNTNSDPLDPS
Formulation:	Liquid. Purified antibody supplied in 1x PBS buffer with 0.09% (w/v) sodium azide and 2% sucrose. <i>Note that this product is shipped as lyophilized powder to China customers.</i>
Concentration:	lot specific
Conjugation:	Unconjugated
Storage:	Store at -20°C as received.
Stability:	Stable for 12 months from date of receipt.
Predicted Protein Size:	38 kDa
Gene Name:	protein O-mannosyltransferase 2
Database Link:	<a href="#">NP_037514</a> <a href="#">Entrez Gene 29954 Human</a> <a href="#">Q9UKY4</a>
Background:	The protein encoded byThis gene is an O-mannosyltransferase that requires interaction withThe product ofThe POMT1 gene for enzymatic function.The encoded protein is found inThe membrane ofThe endoplasmic reticulum. Defects inThis gene are a cause of Walker-Warburg syndrome (WWS). [provided by RefSeq, Oct 2008]
Synonyms:	LGMD2N; MDDGA2; MDDGB2; MDDGC2



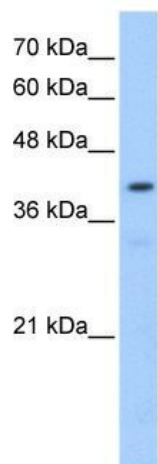
[View online »](#)

**Note:** Immunogen Sequence Homology: Dog: 100%; Pig: 100%; Rat: 100%; Horse: 100%; Human: 100%; Mouse: 100%; Bovine: 100%; Rabbit: 100%; Guinea pig: 100%; Zebrafish: 93%; Yeast: 86%

**Protein Families:** Transmembrane

**Protein Pathways:** O-Mannosyl glycan biosynthesis

**Product images:**



WB Suggested Anti-POMT2 Antibody Titration:  
0.2-1 ug/ml; Positive Control: HepG2 cell lysate