

Product datasheet for **TA341917**

POMT2 Rabbit Polyclonal Antibody

Product data:

| | |
|-------------------------|---|
| Product Type: | Primary Antibodies |
| Applications: | WB |
| Recommended Dilution: | WB |
| Reactivity: | Human |
| Host: | Rabbit |
| Isotype: | IgG |
| Clonality: | Polyclonal |
| Immunogen: | The immunogen for anti-POMT2 antibody: synthetic peptide directed towards the middle region of human POMT2. Synthetic peptide located within the following region: RKHYQVTGYGINGTGDSNDFWRIEVVNRKFGNRIKVLRSRIRFIHLVTGC |
| Formulation: | Liquid. Purified antibody supplied in 1x PBS buffer with 0.09% (w/v) sodium azide and 2% sucrose. <i>Note that this product is shipped as lyophilized powder to China customers.</i> |
| Concentration: | lot specific |
| Conjugation: | Unconjugated |
| Storage: | Store at -20°C as received. |
| Stability: | Stable for 12 months from date of receipt. |
| Predicted Protein Size: | 84 kDa |
| Gene Name: | protein O-mannosyltransferase 2 |
| Database Link: | NP_037514 Entrez Gene 29954 Human Q9UKY4 |
| Background: | The protein encoded byThis gene is an O-mannosyltransferase that requires interaction withThe product ofThe POMT1 gene for enzymatic function.The encoded protein is found inThe membrane ofThe endoplasmic reticulum. Defects inThis gene are a cause of Walker-Warburg syndrome (WWS). [provided by RefSeq, Oct 2008] |
| Synonyms: | LGMD2N; MDDGA2; MDDGB2; MDDGC2 |



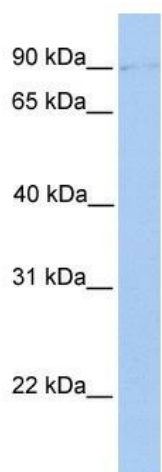
[View online »](#)

Note: Immunogen Sequence Homology: Dog: 100%; Pig: 100%; Rat: 100%; Horse: 100%; Human: 100%; Mouse: 100%; Rabbit: 100%; Guinea pig: 100%; Bovine: 93%; Zebrafish: 85%

Protein Families: Transmembrane

Protein Pathways: O-Mannosyl glycan biosynthesis

Product images:



WB Suggested Anti-POMT2 Antibody Titration:
0.2-1 ug/ml; Positive Control: HeLa cell lysate