

Product datasheet for **TA341916**

ALG6 Rabbit Polyclonal Antibody

Product data:

Product Type:	Primary Antibodies
Applications:	WB
Recommended Dilution:	WB
Reactivity:	Human
Host:	Rabbit
Isotype:	IgG
Clonality:	Polyclonal
Immunogen:	The immunogen for anti-ALG6 antibody: synthetic peptide directed towards the N terminal of human ALG6. Synthetic peptide located within the following region: PLTAYHSELLCAYVAKFINPDWIALHTSRGYESQAHKLFMRRTTVLIADLLI
Formulation:	Liquid. Purified antibody supplied in 1x PBS buffer with 0.09% (w/v) sodium azide and 2% sucrose. <i>Note that this product is shipped as lyophilized powder to China customers.</i>
Concentration:	lot specific
Conjugation:	Unconjugated
Storage:	Store at -20°C as received.
Stability:	Stable for 12 months from date of receipt.
Predicted Protein Size:	58 kDa
Gene Name:	ALG6, alpha-1,3-glucosyltransferase
Database Link:	NP_037471 Entrez Gene 29929 Human Q9Y672
Background:	This gene encodes a member of the ALG6/ALG8 glucosyltransferase family. The encoded protein catalyzes the addition of the first glucose residue to the growing lipid-linked oligosaccharide precursor of N-linked glycosylation. Mutations in this gene are associated with congenital disorders of glycosylation type Ic. [provided by RefSeq, Jul 2008]
Synonyms:	CDG1C



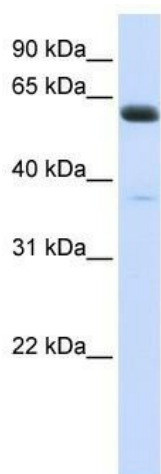
[View online »](#)

Note: Immunogen Sequence Homology: Pig: 100%; Rat: 100%; Human: 100%; Mouse: 100%; Rabbit: 100%; Horse: 93%; Bovine: 93%; Dog: 92%; Zebrafish: 77%

Protein Families: Druggable Genome, Transmembrane

Protein Pathways: Metabolic pathways, N-Glycan biosynthesis

Product images:



WB Suggested Anti-ALG6 Antibody Titration: 0.2-1 ug/ml; ELISA Titer: 1: 62500; Positive Control: Human heart