

Product datasheet for **TA341914**

Synaptogyrin 4 (SYNGR4) Rabbit Polyclonal Antibody

Product data:

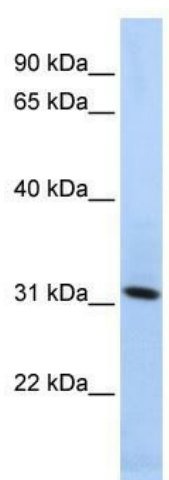
Product Type:	Primary Antibodies
Applications:	WB
Recommended Dilution:	WB
Reactivity:	Human
Host:	Rabbit
Isotype:	IgG
Clonality:	Polyclonal
Immunogen:	The immunogen for anti-SYNGR4 antibody: synthetic peptide directed towards the N terminal of human SYNGR4. Synthetic peptide located within the following region: MHIPKSLQELANSEAVQFLRRPKTITRVFEGVFSLVFSSLLTDGYQNKM
Formulation:	Liquid. Purified antibody supplied in 1x PBS buffer with 0.09% (w/v) sodium azide and 2% sucrose. <i>Note that this product is shipped as lyophilized powder to China customers.</i>
Concentration:	lot specific
Conjugation:	Unconjugated
Storage:	Store at -20°C as received.
Stability:	Stable for 12 months from date of receipt.
Predicted Protein Size:	26 kDa
Gene Name:	synaptogyrin 4
Database Link:	NP_036583 Entrez Gene 23546 Human O95473
Background:	This gene encodes an integral membrane protein. The gene belongs to the synaptogyrin gene family. Like other members of the family, the protein contains four transmembrane regions. The exact function of this protein is unclear. [provided by RefSeq, Jul 2008]
Synonyms:	MGC125805
Note:	Immunogen Sequence Homology: Human: 100%; Pig: 92%; Guinea pig: 92%; Dog: 86%; Rabbit: 86%; Bovine: 85%; Horse: 79%; Rat: 77%



[View online »](#)

Protein Families: Transmembrane

Product images:



WB Suggested Anti-SYNGR4 Antibody Titration:
0.2-1 ug/ml; ELISA Titer: 1: 312500; Positive
Control: HepG2 cell lysate