

Product datasheet for TA341913

NPTN Rabbit Polyclonal Antibody

Product data:

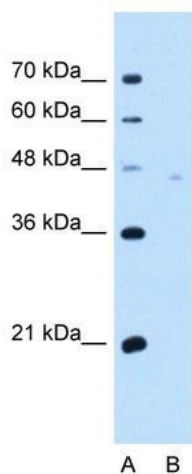
Product Type:	Primary Antibodies
Applications:	IHC, WB
Recommended Dilution:	WB, IHC
Reactivity:	Human
Host:	Rabbit
Isotype:	IgG
Clonality:	Polyclonal
Immunogen:	The immunogen for anti-NPTN antibody: synthetic peptide directed towards the middle region of human NPTN. Synthetic peptide located within the following region: MEYRINKPRAEDSGEYHCVYHFVSAPKANATIEVKAAPDITGHKRSENKN
Formulation:	Liquid. Purified antibody supplied in 1x PBS buffer with 0.09% (w/v) sodium azide and 2% sucrose. <i>Note that this product is shipped as lyophilized powder to China customers.</i>
Concentration:	lot specific
Conjugation:	Unconjugated
Storage:	Store at -20°C as received.
Stability:	Stable for 12 months from date of receipt.
Predicted Protein Size:	42 kDa
Gene Name:	neuroplastin
Database Link:	NP_036560 Entrez Gene 27020 Human Q9Y639
Background:	This gene encodes a type I transmembrane protein belonging toThe Ig superfamily.The protein is believed to be involved in cell-cell interactions or cell-substrate interactions. Alternative splicing results in multiple transcript variants. [provided by RefSeq, May 2009]
Synonyms:	GP55; GP65; np55; np65; SDFR1; SDR1
Note:	Immunogen Sequence Homology: Dog: 100%; Pig: 100%; Rat: 100%; Horse: 100%; Human: 100%; Mouse: 100%; Bovine: 100%; Rabbit: 100%; Guinea pig: 100%



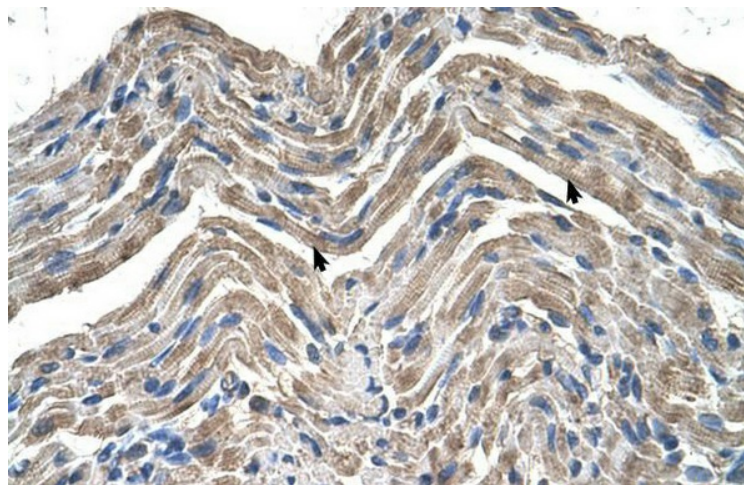
[View online »](#)

Protein Families: Druggable Genome, Transmembrane

Product images:



WB Suggested Anti-NPTN Antibody Titration: 5.0 ug/ml; Positive Control: HepG2 cell lysate



Human Muscle