

Product datasheet for **TA341911**

CMT (ICMT) Rabbit Polyclonal Antibody

Product data:

| | |
|-------------------------|---|
| Product Type: | Primary Antibodies |
| Applications: | WB |
| Recommended Dilution: | WB |
| Reactivity: | Human |
| Host: | Rabbit |
| Isotype: | IgG |
| Clonality: | Polyclonal |
| Immunogen: | The immunogen for anti-ICMT antibody: synthetic peptide directed towards the middle region of human ICMT. Synthetic peptide located within the following region: GSNFNHVVQNEKSDTHLVTSGVYAWFRHPSYVGWFWYSIGTQVMLCNPI |
| Formulation: | Liquid. Purified antibody supplied in 1x PBS buffer with 0.09% (w/v) sodium azide and 2% sucrose. <i>Note that this product is shipped as lyophilized powder to China customers.</i> |
| Concentration: | lot specific |
| Conjugation: | Unconjugated |
| Storage: | Store at -20°C as received. |
| Stability: | Stable for 12 months from date of receipt. |
| Predicted Protein Size: | 32 kDa |
| Gene Name: | isoprenylcysteine carboxyl methyltransferase |
| Database Link: | NP_036537 Entrez Gene 23463 Human O60725 |
| Background: | This gene encodesThe third of three enzymes that posttranslationally modify isoprenylated C-terminal cysteine residues in certain proteins and target those proteins toThe cell membrane.This enzyme localizes toThe endoplasmic reticulum. Alternative splicing may result in other transcript variants, butThe biological validity of those transcripts has not been determined. [provided by RefSeq, Jul 2008] |
| Synonyms: | HSTE14; MST098; MSTP098; PCCMT; PCMT; PPMT |

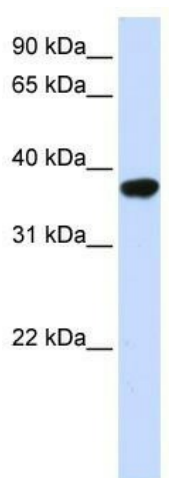


[View online »](#)

Note: Immunogen Sequence Homology: Pig: 100%; Rat: 100%; Human: 100%; Mouse: 100%; Rabbit: 100%; Guinea pig: 100%; Dog: 93%; Horse: 93%; Bovine: 93%; Yeast: 79%

Protein Families: Transmembrane

Product images:



WB Suggested Anti-ICMT Antibody Titration: 0.2-1 ug/ml; ELISA Titer: 1: 1562500; Positive Control: Human heart