

Product datasheet for **TA341909**

TSPAN15 Rabbit Polyclonal Antibody

Product data:

Product Type:	Primary Antibodies
Applications:	WB
Recommended Dilution:	WB
Reactivity:	Human
Host:	Rabbit
Isotype:	IgG
Clonality:	Polyclonal
Immunogen:	The immunogen for anti-TSPAN15 antibody: synthetic peptide directed towards the C terminal of human TSPAN15. Synthetic peptide located within the following region: LGILLPQFLGVLLTLLYITRVEDIIMEHSVTDGLLGPGAKPSVEAAGTGC
Formulation:	Liquid. Purified antibody supplied in 1x PBS buffer with 0.09% (w/v) sodium azide and 2% sucrose. <i>Note that this product is shipped as lyophilized powder to China customers.</i>
Concentration:	lot specific
Conjugation:	Unconjugated
Storage:	Store at -20°C as received.
Stability:	Stable for 12 months from date of receipt.
Predicted Protein Size:	33 kDa
Gene Name:	tetraspanin 15
Database Link:	NP_036471 Entrez Gene 23555 Human O95858
Background:	The protein encoded byThis gene is a member ofThe transmembrane 4 superfamily, also known asThe tetraspanin family. Most ofThese members are cell-surface proteins that are characterized byThe presence of four hydrophobic domains.The proteins mediate signal transduction events that play a role inThe regulation of cell development, activation, growth and motility.The use of alternate polyadenylation sites has been found forThis gene. [provided by RefSeq, Jul 2008]



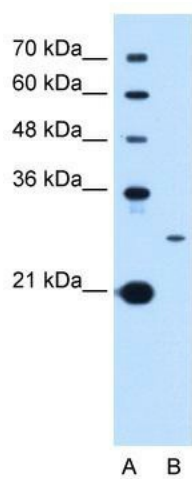
[View online »](#)

Synonyms: 2700063A19Rik; NET-7; NET7; TM4SF15

Note: Immunogen Sequence Homology: Pig: 100%; Rat: 100%; Horse: 100%; Human: 100%; Mouse: 100%; Rabbit: 100%; Guinea pig: 100%; Dog: 93%; Bovine: 93%

Protein Families: Transmembrane

Product images:



WB Suggested Anti-TSPAN15 Antibody Titration: 0.2-1 ug/ml; Positive Control: HepG2 cell lysate