

## Product datasheet for **TA341907**

### TSPAN12 Rabbit Polyclonal Antibody

#### Product data:

Product Type:	Primary Antibodies
Applications:	WB
Recommended Dilution:	WB
Reactivity:	Human
Host:	Rabbit
Isotype:	IgG
Clonality:	Polyclonal
Immunogen:	The immunogen for anti-TSPAN12 antibody: synthetic peptide directed towards the middle region of human TSPAN12. Synthetic peptide located within the following region: EFPGCSKQAHQEDLSDLYQEGCGKMYSLRGTQQLQVLRFLGISIGVTQ
Formulation:	Liquid. Purified antibody supplied in 1x PBS buffer with 0.09% (w/v) sodium azide and 2% sucrose. <i>Note that this product is shipped as lyophilized powder to China customers.</i>
Concentration:	lot specific
Conjugation:	Unconjugated
Storage:	Store at -20°C as received.
Stability:	Stable for 12 months from date of receipt.
Predicted Protein Size:	35 kDa
Gene Name:	tetraspanin 12
Database Link:	<a href="#">NP_036470</a> <a href="#">Entrez Gene 23554 Human</a> <a href="#">O95859</a>
Background:	The protein encoded by this gene is a member of the transmembrane 4 superfamily, also known as the tetraspanin family. Most of these members are cell-surface proteins that are characterized by the presence of four hydrophobic domains. The proteins mediate signal transduction events that play a role in the regulation of cell development, activation, growth and motility. [provided by RefSeq, Jul 2008]
Synonyms:	EVR5; NET-2; NET2; TM4SF12

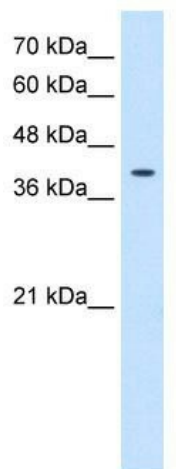


[View online »](#)

**Note:** Immunogen Sequence Homology: Dog: 100%; Pig: 100%; Rat: 100%; Horse: 100%; Human: 100%; Mouse: 100%; Bovine: 100%; Rabbit: 100%; Guinea pig: 100%; Zebrafish: 93%

**Protein Families:** Transmembrane

**Product images:**



WB Suggested Anti-TSPAN12 Antibody Titration:  
0.2-1 ug/ml; Positive Control: HepG2 cell lysate