

Product datasheet for **TA341903**

TRAM2 Rabbit Polyclonal Antibody

Product data:

Product Type:	Primary Antibodies
Applications:	WB
Recommended Dilution:	WB
Reactivity:	Human
Host:	Rabbit
Isotype:	IgG
Clonality:	Polyclonal
Immunogen:	The immunogen for anti-TRAM2 antibody: synthetic peptide directed towards the N terminal of human TRAM2. Synthetic peptide located within the following region: MFEVTAKTAFILFPQYNISVPTADSETVHYHYGPKDLVTILFYIFITII
Formulation:	Liquid. Purified antibody supplied in 1x PBS buffer with 0.09% (w/v) sodium azide and 2% sucrose. <i>Note that this product is shipped as lyophilized powder to China customers.</i>
Concentration:	lot specific
Conjugation:	Unconjugated
Storage:	Store at -20°C as received.
Stability:	Stable for 12 months from date of receipt.
Predicted Protein Size:	43 kDa
Gene Name:	translocation associated membrane protein 2
Database Link:	NP_036420 Entrez Gene 9697 Human Q15035
Background:	TRAM2 is a component ofThe translocon, a gated macromolecular channel that controlsThe posttranslational processing of nascent secretory and membrane proteins atThe endoplasmic reticulum (ER) membrane. [supplied by OMIM, Jul 2004]. ##Evidence-Data-START## Transcript exon combination :: BC028121.1, D31762.1 [ECO:0000332] RNAseq introns :: mixed/partial sample support ERS025081, ERS025082 [ECO:0000350] ##Evidence-Data-END## COMPLETENESS: complete onThe 3' end.



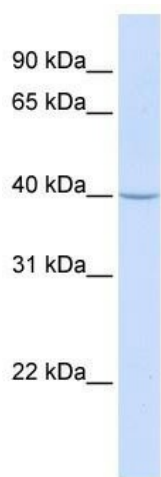
[View online »](#)

Synonyms: KIAA0057

Note: Immunogen Sequence Homology: Horse: 100%; Human: 100%; Mouse: 100%; Rabbit: 100%; Dog: 93%; Rat: 93%; Pig: 92%; Bovine: 86%; Guinea pig: 86%

Protein Families: Transmembrane

Product images:



WB Suggested Anti-TRAM2 Antibody Titration:
0.2-1 ug/ml; ELISA Titer: 1: 62500; Positive
Control: Human Placenta