

Product datasheet for TA341902

C20orf103 (LAMP5) Rabbit Polyclonal Antibody

Product data:

Product Type:	Primary Antibodies
Applications:	WB
Recommended Dilution:	WB
Reactivity:	Human
Host:	Rabbit
Isotype:	IgG
Clonality:	Polyclonal
Immunogen:	The immunogen for anti-C20orf103 antibody: synthetic peptide directed towards the middle region of human C20orf103. Synthetic peptide located within the following region: CQAQQTISLASSDPQKTVMILSAVHIQPFDIISDFVFSEEHKCPVDERE
Formulation:	Liquid. Purified antibody supplied in 1x PBS buffer with 0.09% (w/v) sodium azide and 2% sucrose. <i>Note that this product is shipped as lyophilized powder to China customers.</i>
Concentration:	lot specific
Conjugation:	Unconjugated
Storage:	Store at -20°C as received.
Stability:	Stable for 12 months from date of receipt.
Predicted Protein Size:	28 kDa
Gene Name:	lysosomal associated membrane protein family member 5
Database Link:	NP_036393 Entrez Gene 24141 Human Q9UJQ1
Background:	The exact function of C20orf103 remains unknown.
Synonyms:	BAD-LAMP; BADLAMP; C20orf103; LAMP-5; UNC-43
Note:	Immunogen Sequence Homology: Dog: 100%; Pig: 100%; Rat: 100%; Horse: 100%; Human: 100%; Mouse: 100%; Bovine: 100%; Guinea pig: 100%; Rabbit: 93%; Zebrafish: 82%
Protein Families:	Transmembrane

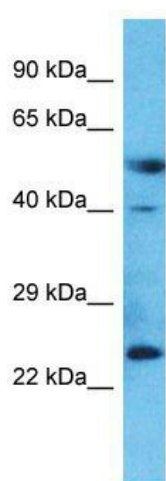


[View online »](#)

Product images:



WB Suggested Anti-C20orf103 Antibody Titration:
0.2-1 ug/ml; ELISA Titer: 1: 312500; Positive
Control: 721_B cell lysate



Host: Rabbit; Target Name: LAMP5; Sample
Tissue: Placenta lysates; Antibody Dilution: 1.0
ug/ml