

Product datasheet for **TA341901**

TIM 1 (HAVCR1) Rabbit Polyclonal Antibody

Product data:

Product Type:	Primary Antibodies
Applications:	WB
Recommended Dilution:	WB
Reactivity:	Human
Host:	Rabbit
Isotype:	IgG
Clonality:	Polyclonal
Immunogen:	The immunogen for anti-HAVCR1 antibody: synthetic peptide directed towards the N terminal of human HAVCR1. Synthetic peptide located within the following region: CHYSGAVTSMCWNRGSCSLFTCQNGIWTNGTHVTYRKDTRYKLLGDLSR
Formulation:	Liquid. Purified antibody supplied in 1x PBS buffer with 0.09% (w/v) sodium azide and 2% sucrose. <i>Note that this product is shipped as lyophilized powder to China customers.</i>
Concentration:	lot specific
Conjugation:	Unconjugated
Storage:	Store at -20°C as received.
Stability:	Stable for 12 months from date of receipt.
Predicted Protein Size:	39 kDa
Gene Name:	hepatitis A virus cellular receptor 1
Database Link:	NP_036338 Entrez Gene 26762 Human Q96D42
Background:	The protein encoded byThis gene is a membrane receptor for both human hepatitis A virus (HHAV) and TIMD4.The encoded protein may be involved inThe moderation of asthma and allergic diseases.The reference genome represents an allele that retains a MTTVP amino acid segment that confers protection against atopy in HHAV seropositive individuals. Three transcript variants encodingThe same protein have been found forThis gene. [provided by RefSeq, Mar 2010]



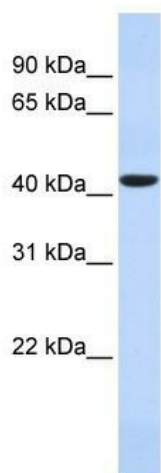
[View online »](#)

Synonyms: HAVCR; HAVCR-1; KIM-1; KIM1; TIM; TIM-1; TIM1; TIMD-1; TIMD1

Note: Immunogen Sequence Homology: Human: 100%

Protein Families: Druggable Genome, Transmembrane

Product images:



WB Suggested Anti-HAVCR1 Antibody Titration:
0.2-1 ug/ml; ELISA Titer: 1: 12500; Positive
Control: Human Muscle