

Product datasheet for **TA341899**

FKBP38 (FKBP8) Rabbit Polyclonal Antibody

Product data:

Product Type:	Primary Antibodies
Applications:	WB
Recommended Dilution:	WB
Reactivity:	Human
Host:	Rabbit
Isotype:	IgG
Clonality:	Polyclonal
Immunogen:	The immunogen for anti-FKBP8 antibody: synthetic peptide directed towards the C terminal of human FKBP8. Synthetic peptide located within the following region: AIPILRAALKLEPSNKTIHAELSKLVKKHAAQRSTETALYRKMLGNPSRL
Formulation:	Liquid. Purified antibody supplied in 1x PBS buffer with 0.09% (w/v) sodium azide and 2% sucrose. <i>Note that this product is shipped as lyophilized powder to China customers.</i>
Concentration:	lot specific
Conjugation:	Unconjugated
Storage:	Store at -20°C as received.
Stability:	Stable for 12 months from date of receipt.
Predicted Protein Size:	45 kDa
Gene Name:	FK506 binding protein 8
Database Link:	NP_036313 Entrez Gene 23770 Human Q14318
Background:	The protein encoded byThis gene is a member ofThe immunophilin protein family, which play a role in immunoregulation and basic cellular processes involving protein folding and trafficking. UnlikeThe other members ofThe family,This encoded protein does not seem to have PPlase/rotamase activity. It may have a role in neurons associated with memory function. [provided by RefSeq, Jul 2008]
Synonyms:	FKBP38; FKBP8

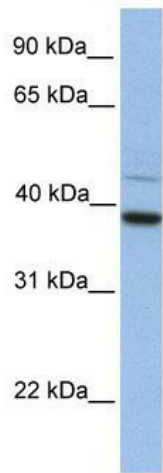


[View online »](#)

Note: Immunogen Sequence Homology: Dog: 100%; Pig: 100%; Rat: 100%; Goat: 100%; Horse: 100%; Human: 100%; Mouse: 100%; Bovine: 100%; Zebrafish: 100%; Guinea pig: 100%

Protein Families: Druggable Genome, Transmembrane

Product images:



WB Suggested Anti-FKBP8 Antibody Titration: 0.2-1 ug/ml; Positive Control: HeLa cell lysate