

Product datasheet for **TA341896**

CHIC2 Rabbit Polyclonal Antibody

Product data:

Product Type:	Primary Antibodies
Applications:	IHC, WB
Recommended Dilution:	WB, IHC
Reactivity:	Human
Host:	Rabbit
Isotype:	IgG
Clonality:	Polyclonal
Immunogen:	The immunogen for anti-CHIC2 antibody: synthetic peptide directed towards the N terminal of human CHIC2. Synthetic peptide located within the following region: EEQLLKYSPPVVRGSGHVTVFGLSNKFESEFPSSLTGKVAPEEFKASI
Formulation:	Liquid. Purified antibody supplied in 1x PBS buffer with 0.09% (w/v) sodium azide and 2% sucrose. <i>Note that this product is shipped as lyophilized powder to China customers.</i>
Concentration:	lot specific
Conjugation:	Unconjugated
Storage:	Store at -20°C as received.
Stability:	Stable for 12 months from date of receipt.
Predicted Protein Size:	19 kDa
Gene Name:	cysteine rich hydrophobic domain 2
Database Link:	NP_036242 Entrez Gene 26511 Human Q9UKJ5
Background:	This gene encodes a member of the CHIC family of proteins. The encoded protein contains a cysteine-rich hydrophobic (CHIC) motif, and is localized to vesicular structures and the plasma membrane. This gene is associated with some cases of acute myeloid leukemia. [provided by RefSeq, Jul 2008]
Synonyms:	BTL

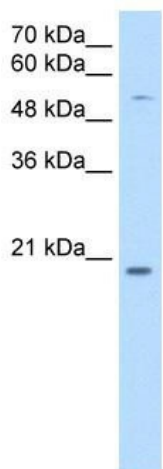


[View online »](#)

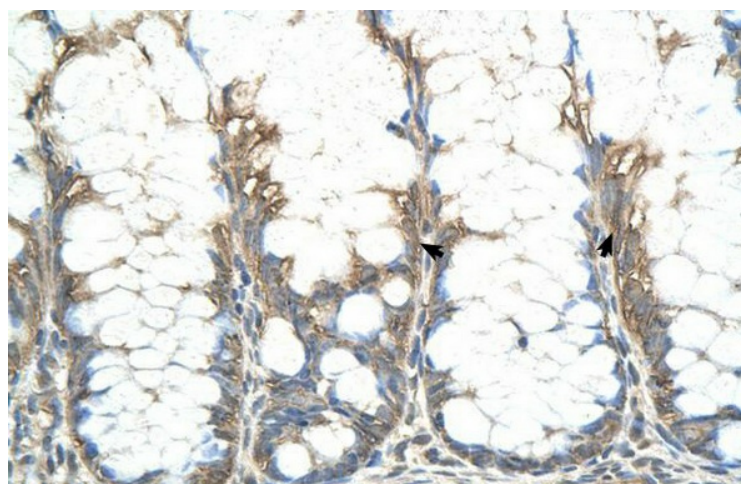
Note: Immunogen Sequence Homology: Dog: 100%; Pig: 100%; Rat: 100%; Horse: 100%; Human: 100%; Mouse: 100%; Bovine: 100%; Rabbit: 100%; Guinea pig: 100%; Zebrafish: 93%

Protein Families: Druggable Genome, Transmembrane

Product images:



WB Suggested Anti-CHIC2 Antibody Titration: 0.25 ug/ml; Positive Control: HepG2 cell lysate



Human Intestine