

## Product datasheet for **TA341895**

### TMEM59L Rabbit Polyclonal Antibody

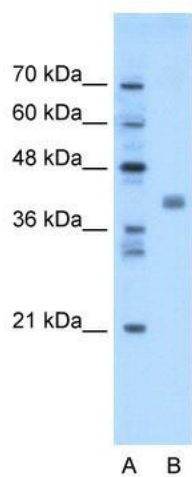
#### Product data:

|                         |  |
|-------------------------|--|
| Product Type:           | Primary Antibodies   |
| Applications:           | WB   |
| Recommended Dilution:   | WB   |
| Reactivity:             | Human  |
| Host:                   | Rabbit   |
| Isotype:                | IgG  |
| Clonality:              | Polyclonal   |
| Immunogen:              | The immunogen for anti-TMEM59L antibody: synthetic peptide directed towards the N terminal of human TMEM59L. Synthetic peptide located within the following region: PAASAPSARDPFAPQLGDTQNCQLRCRDRDLGPQPSQAGLEGASESPYDR |
| Formulation:            | Liquid. Purified antibody supplied in 1x PBS buffer with 0.09% (w/v) sodium azide and 2% sucrose.<br><i>Note that this product is shipped as lyophilized powder to China customers.</i>                                |
| Concentration:          | lot specific   |
| Conjugation:            | Unconjugated   |
| Storage:                | Store at -20°C as received.  |
| Stability:              | Stable for 12 months from date of receipt.   |
| Predicted Protein Size: | 35 kDa   |
| Gene Name:              | transmembrane protein 59 like  |
| Database Link:          | <a href="#">NP_036241</a><br><a href="#">Entrez Gene 25789 Human</a><br><a href="#">Q9UK28</a>   |
| Background:             | This gene encodes a predicted type-I membrane glycoprotein. The encoded protein may play a role in functioning of the central nervous system. [provided by RefSeq, Jul 2008]   |
| Synonyms:               | BSMAP; C19orf4   |
| Note:                   | Immunogen Sequence Homology: Human: 100%   |
| Protein Families:       | Transmembrane  |



[View online »](#)

## Product images:



WB Suggested Anti-TMEM59L Antibody Titration:  
1.25 ug/ml; Positive Control: Transfected 293T