

Product datasheet for **TA341893**

BACE2 Rabbit Polyclonal Antibody

Product data:

Product Type:	Primary Antibodies
Applications:	WB
Recommended Dilution:	WB
Reactivity:	Human
Host:	Rabbit
Isotype:	IgG
Clonality:	Polyclonal
Immunogen:	The immunogen for anti-BACE2 antibody: synthetic peptide directed towards the middle region of human BACE2. Synthetic peptide located within the following region: SLNLDCREYNADKAIVDSGTTLLRLPQKVFDAVVEAVARASLIPEFSDGF
Formulation:	Liquid. Purified antibody supplied in 1x PBS buffer with 0.09% (w/v) sodium azide and 2% sucrose. <i>Note that this product is shipped as lyophilized powder to China customers.</i>
Concentration:	lot specific
Conjugation:	Unconjugated
Storage:	Store at -20°C as received.
Stability:	Stable for 12 months from date of receipt.
Predicted Protein Size:	37 kDa
Gene Name:	beta-site APP-cleaving enzyme 2
Database Link:	NP_620477 Entrez Gene 25825 Human Q9Y5Z0
Background:	This gene encodes an integral membrane glycoprotein that functions as an aspartic protease. The encoded protein cleaves amyloid precursor protein into amyloid beta peptide, which is a critical step in the etiology of Alzheimer's disease and Down syndrome. The protein precursor is further processed into an active mature peptide. Alternative splicing results in multiple transcript variants. [provided by RefSeq, Jul 2013]
Synonyms:	AEPLC; ALP56; ASP1; ASP21; BAE2; CDA13; CEAP1; DRAP



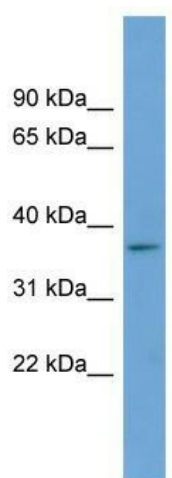
[View online »](#)

Note: Immunogen Sequence Homology: Dog: 100%; Pig: 100%; Rat: 100%; Horse: 100%; Human: 100%; Mouse: 100%; Bovine: 100%; Guinea pig: 100%; Zebrafish: 92%; Rabbit: 85%

Protein Families: Druggable Genome, Protease, Transmembrane

Protein Pathways: Alzheimer's disease

Product images:



WB Suggested Anti-BACE2 Antibody Titration: 0.2-1 ug/ml; ELISA Titer: 1: 62500; Positive Control: ACHN cell lysate. BACE2 is supported by BioGPS gene expression data to be expressed in ACHN