

Product datasheet for **TA341892**

BACE1 Rabbit Polyclonal Antibody

Product data:

Product Type:	Primary Antibodies
Applications:	IHC, WB
Recommended Dilution:	WB, IHC
Reactivity:	Human, Mouse
Host:	Rabbit
Isotype:	IgG
Clonality:	Polyclonal
Immunogen:	The immunogen for anti-BACE1 antibody: synthetic peptide directed towards the N terminal of human BACE1. Synthetic peptide located within the following region: GGQYYVEMTVGSPQTLNILVDTGSSNFAVGAAPHFLHRYRQLSSTY
Formulation:	Liquid. Purified antibody supplied in 1x PBS buffer with 0.09% (w/v) sodium azide and 2% sucrose. <i>Note that this product is shipped as lyophilized powder to China customers.</i>
Concentration:	lot specific
Conjugation:	Unconjugated
Storage:	Store at -20°C as received.
Stability:	Stable for 12 months from date of receipt.
Predicted Protein Size:	51 kDa
Gene Name:	beta-secretase 1
Database Link:	NP_036236 Entrez Gene 23821 Mouse Entrez Gene 23621 Human P56817

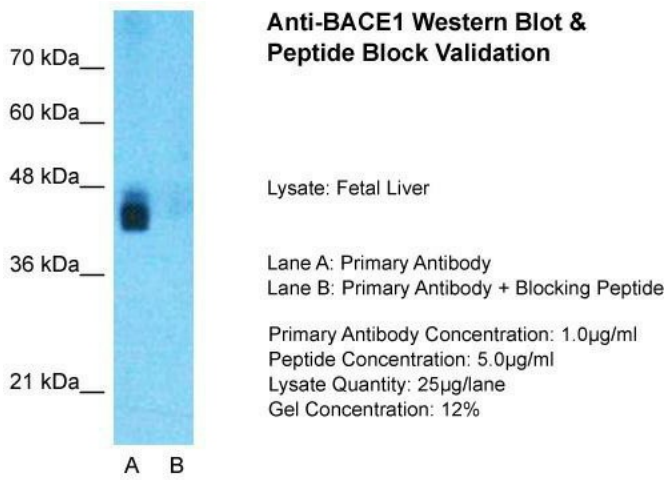


[View online »](#)

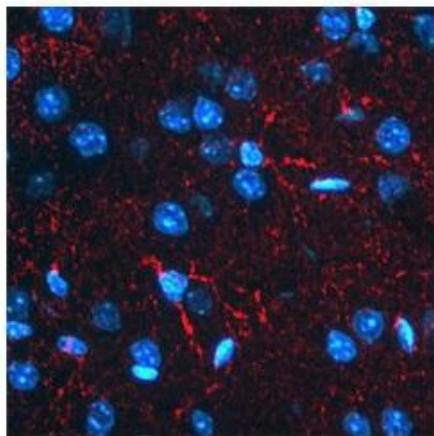
Background:	Cerebral deposition of amyloid beta peptide is an early and critical feature of Alzheimer's disease. Amyloid beta peptide is generated by proteolytic cleavage of amyloid precursor protein (APP) by two proteases, one of which is The protein encoded by This gene. The encoded protein, a member of The peptidase A1 protein family, is a type I integral membrane glycoprotein and aspartic protease that is found mainly in The Golgi. Multiple transcript variants encoding different isoforms have been described for This gene. [provided by RefSeq, May 2011]
Synonyms:	ASP2; BACE; HSPC104
Note:	Immunogen Sequence Homology: Dog: 100%; Pig: 100%; Rat: 100%; Horse: 100%; Human: 100%; Mouse: 100%; Bovine: 100%; Rabbit: 100%; Guinea pig: 100%; Zebrafish: 91%
Protein Families:	Druggable Genome, Protease, Transmembrane
Protein Pathways:	Alzheimer's disease

Product images:

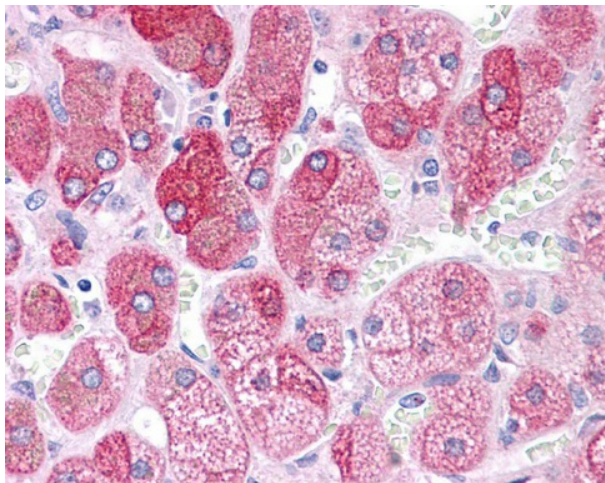
WB Suggested Anti-BACE1 Antibody Titration: 0.2-1 ug/ml; ELISA Titer: 1: 62500; Positive Control: Human Liver



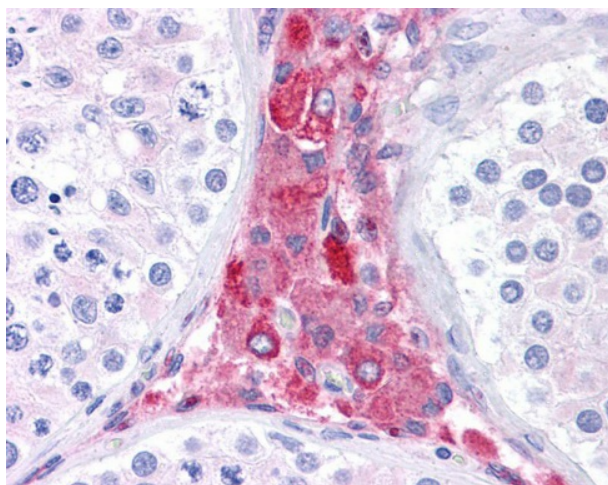
Host: Rabbit; Target Name: BACE1; Sample Tissue: Human Fetal Liver; Lane A: Primary Antibody; Lane B: Primary Antibody + Blocking Peptide; Primary Antibody Concentration: 1 ug/ml; Peptide Concentration: 5 ug/ml; Lysate Quantity: 25 ug/lane/lane; Gel Conce



mouse astrocytes



Adrenal



Testis