

Product datasheet for **TA341891**

BACE1 Rabbit Polyclonal Antibody

Product data:

Product Type:	Primary Antibodies
Applications:	WB
Recommended Dilution:	WB
Reactivity:	Mouse
Host:	Rabbit
Isotype:	IgG
Clonality:	Polyclonal
Immunogen:	The immunogen for anti-Bace1 antibody: synthetic peptide corresponding to a region of Mouse. Synthetic peptide located within the following region: YTPIRREWYYEIVRVEINGQDLKMDCKEYNYDKSIVDSGTTNLRPKK
Formulation:	Liquid. Purified antibody supplied in 1x PBS buffer with 0.09% (w/v) sodium azide and 2% sucrose. <i>Note that this product is shipped as lyophilized powder to China customers.</i>
Concentration:	lot specific
Conjugation:	Unconjugated
Storage:	Store at -20°C as received.
Stability:	Stable for 12 months from date of receipt.
Predicted Protein Size:	56 kDa
Gene Name:	beta-secretase 1
Database Link:	NP_036236 Entrez Gene 23821 Mouse P56817
Background:	Responsible forThe proteolytic processing ofThe amyloid precursor protein (APP). Cleaves atThe N-terminus ofThe A-beta peptide sequence, between residues 671 and 672 of APP, leads toThe generation and extracellular release of beta-cleaved soluble APP, and a corresponding cell-associated C-terminal fragment which is later released by gamma-secretase.
Synonyms:	ASP2; BACE; HSPC104



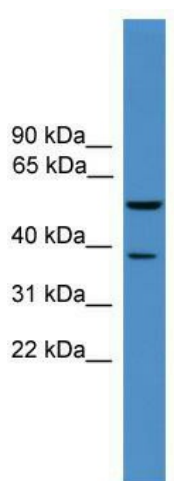
[View online »](#)

Note: Immunogen Sequence Homology: Dog: 100%; Pig: 100%; Rat: 100%; Horse: 100%; Human: 100%; Mouse: 100%; Bovine: 100%; Rabbit: 100%; Zebrafish: 100%; Guinea pig: 100%

Protein Families: Druggable Genome, Protease, Transmembrane

Protein Pathways: Alzheimer's disease

Product images:



WB Suggested Anti-Bace1 Antibody Titration: 0.2-1 ug/ml; ELISA Titer: 1: 1562500; Positive Control: Mouse Heart